

Screened Children 2022

134,247

Key Figures Feb 2022



63,345

Screened Children (0 - 59 months) in Feb



23%

Screened Children (Under 6 months)



21%

GAM (WHZ) (6 - 59 months)



47%

Stunting (6 - 59 months)



19%

Anemia (6 - 59 months)



44%

Underweight (0 - 59 months)

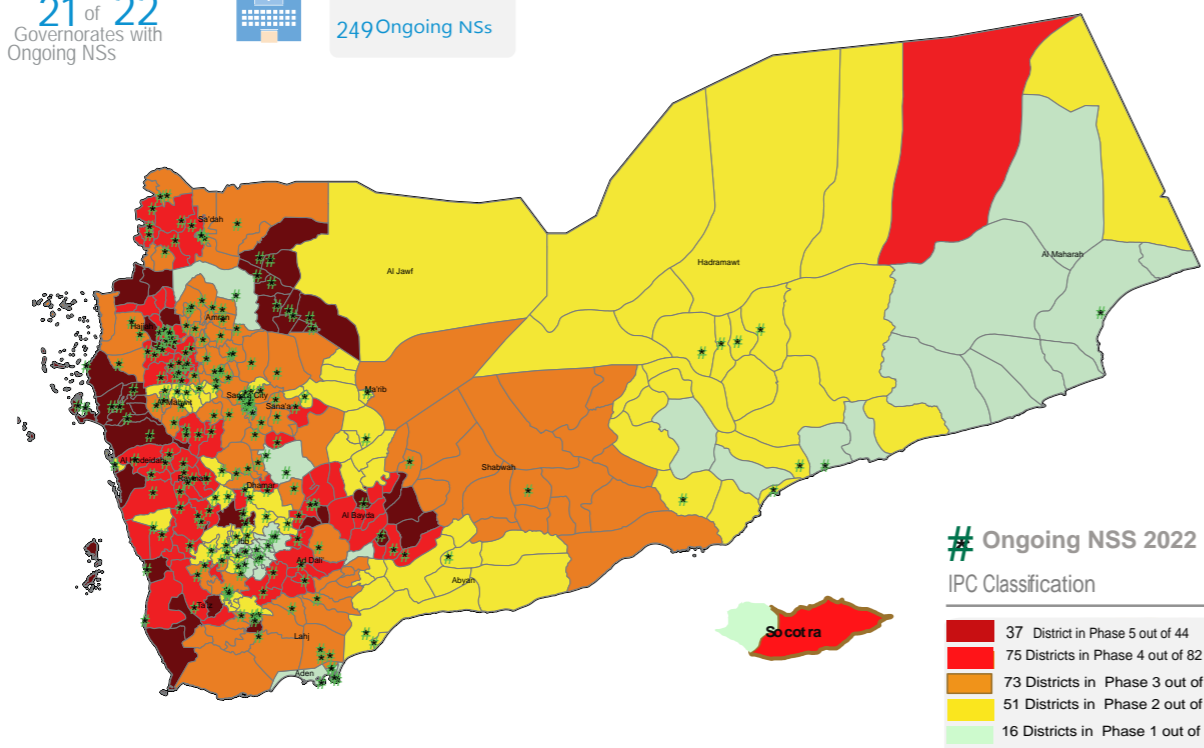


15%

Exclusive Breastfeeding (0 - 6 months)

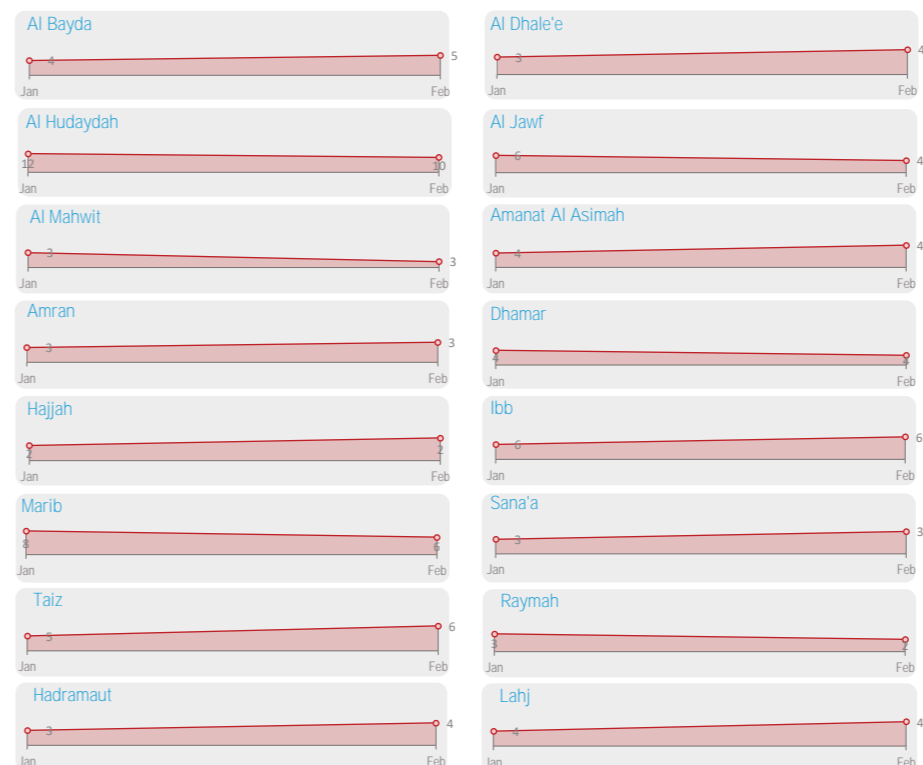
Geographical Presence of Nutrition Sentinel Sites

21 of 22 Governorates with Ongoing NSS
249 Ongoing NSS



Ongoing NSS 2022
IPC Classification
37 District in Phase 5 out of 44
75 Districts in Phase 4 out of 82
73 Districts in Phase 3 out of 98
51 Districts in Phase 2 out of 80
16 Districts in Phase 1 out of 29

Proportion † of Severe Acute Malnutrition (SAM) Monthly Trend Reporting per Gov

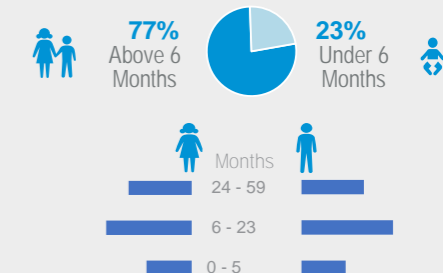


Screened Children Feb

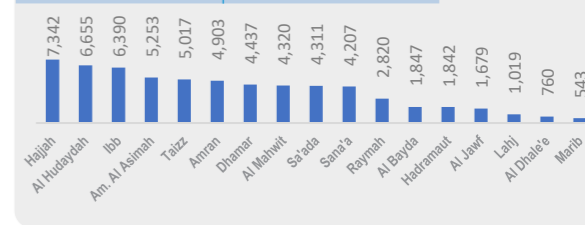
63,345 Screened Children



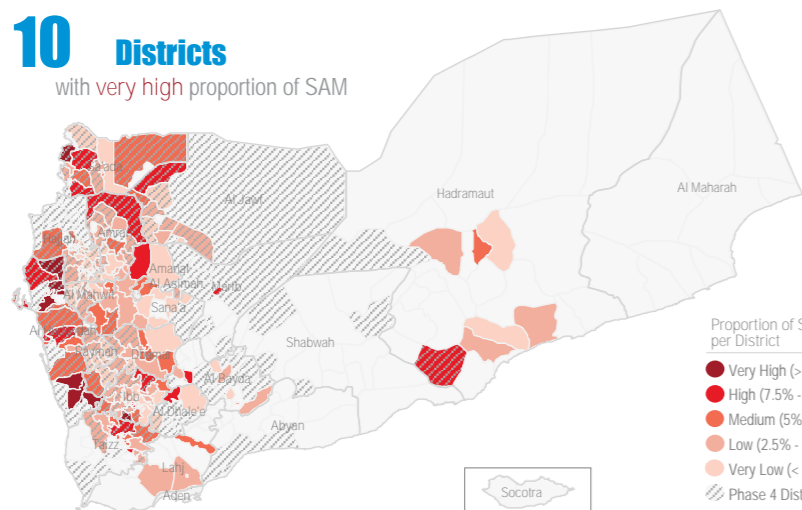
Screened Children by age group



Screened Children per Governorate

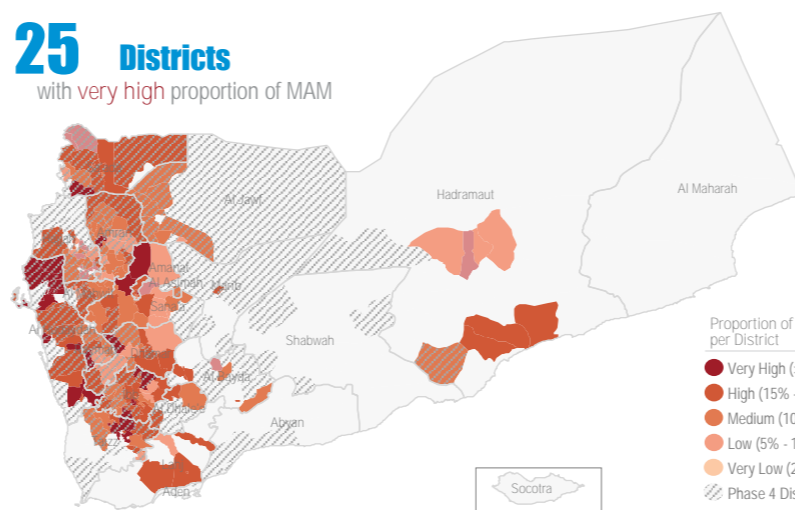


Proportion † of Severe Acute Malnutrition (SAM)* Feb



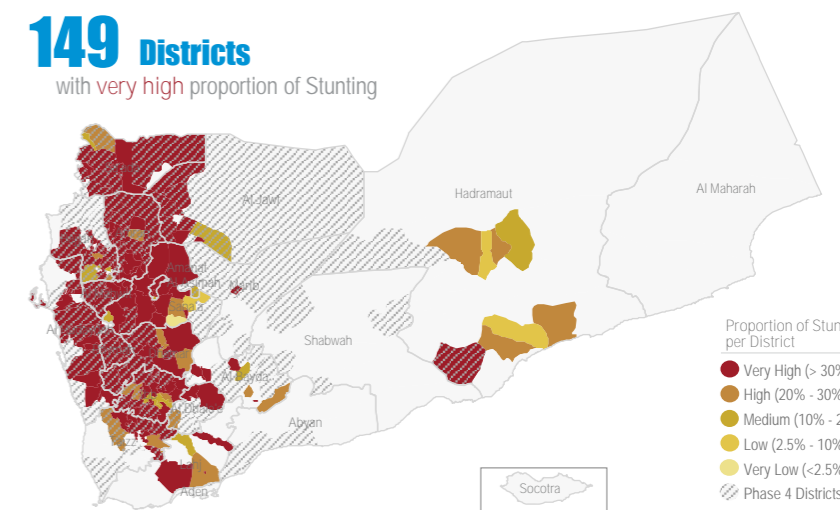
Proportion of SAM* per District
Very High (> 10%)
High (7.5% - 10%)
Medium (5% - 7.5%)
Low (2.5% - 5%)
Very Low (< 2.5%)
Phase 4 Districts

Proportion † of Moderate Acute Malnutrition (MAM)* Feb



Proportion of MAM* per District
Very High (> 25%)
High (15% - 25%)
Medium (10% - 15%)
Low (5% - 10%)
Very Low (2.5% - 5%)
Phase 4 Districts

Proportion † of Stunting Feb



Proportion of Stunting per District
Very High (> 30%)
High (20% - 30%)
Medium (10% - 20%)
Low (2.5% - 10%)
Very Low (< 2.5%)
Phase 4 Districts

Objectives of the Yemen Nutrition Surveillance System

Monitor children nutritional status, early detection of malnutrition and case referral.
Share information and trigger alert verification.

Ensuring the continuity and safety of services:

Nutritional assessment in NSS is normally performed through the measurement of child's weigh, height/length, MUAC, age, hemoglobin level, breastfeeding status and oedema. Because of COVID-19 to mitigate the risk of cross works to expand coverage and improve data quality, funded by World Bank, adapted protocol have been put in place to ensure safe screening services. Some indicators, e.g. acute malnutrition by WHZ and stunting, were temporarily excluded from the set of measurements, as an interim measure to control the spread of infection, although the use of anthropometric tools is safe after sanitization*. Currently, although some sites are still following these operating procedures, most of the sentinel sites have resumed the assessment of all indicators.

Methodology

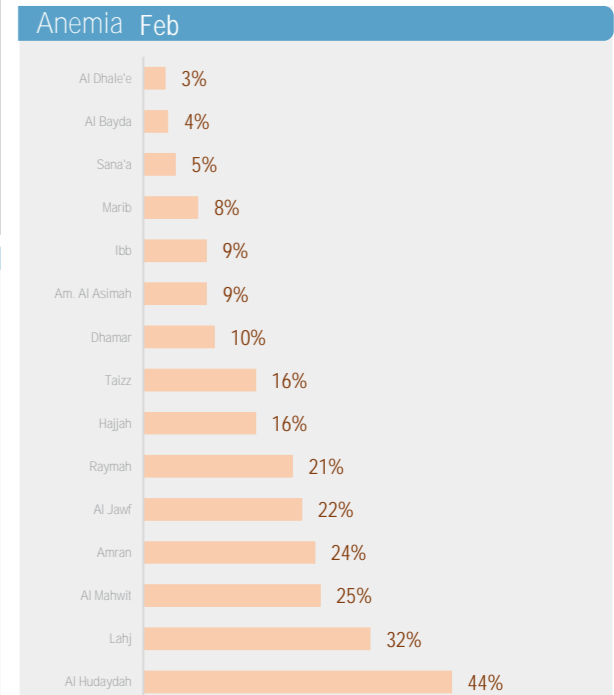
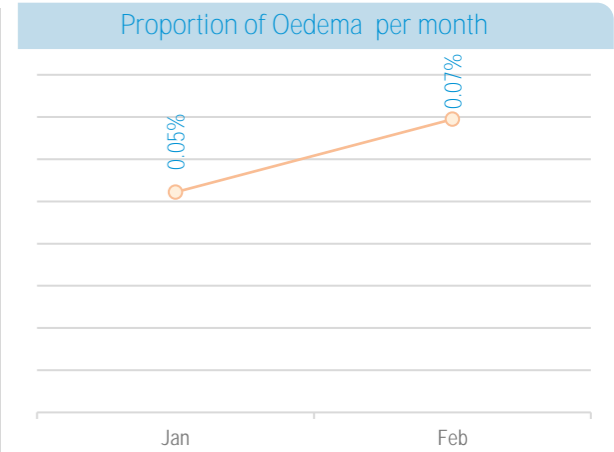
Facility-based surveillance system, established mainly in district hospitals across the country. The system provides

proportion of children under five years found suffering from any forms of malnutrition, out of the total children screened. It is not a formal survey using sampling methods to produce representative results. The results only reflect the status of children who have attended the health facility in the month under review. The system tracks Global core nutrition indicators: Stunting, Wasting, Exclusive breastfeeding and Anemia. This bulletin is based on reports received by the health facility surveillance MoPHP teams*. WHO supports the MoPHP and constantly works to expand coverage and improve data quality, funded by World Bank.

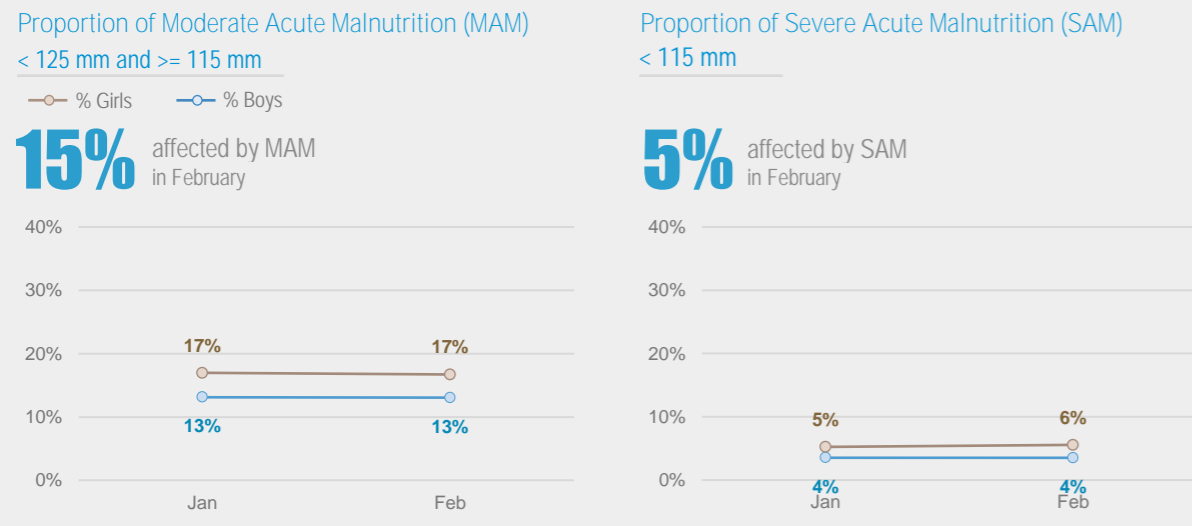
*The bulletin based on accepted reporting data which reflects on the presence of governorates in dashboard.
**WHO-UNICEF Implementation Guidance for the Prevention, Early Detection and Treatment of Wasting in Children 0-59 Months Through National Health Systems in the Context of COVID-19.
SOP for nutritional screening in Nutrition Surveillance Sites established in health facilities (Hospitals and PHC), in line with COVID19 preventive measures

Summary for Nutrition Indicators Feb 2022 in Reporting Gov

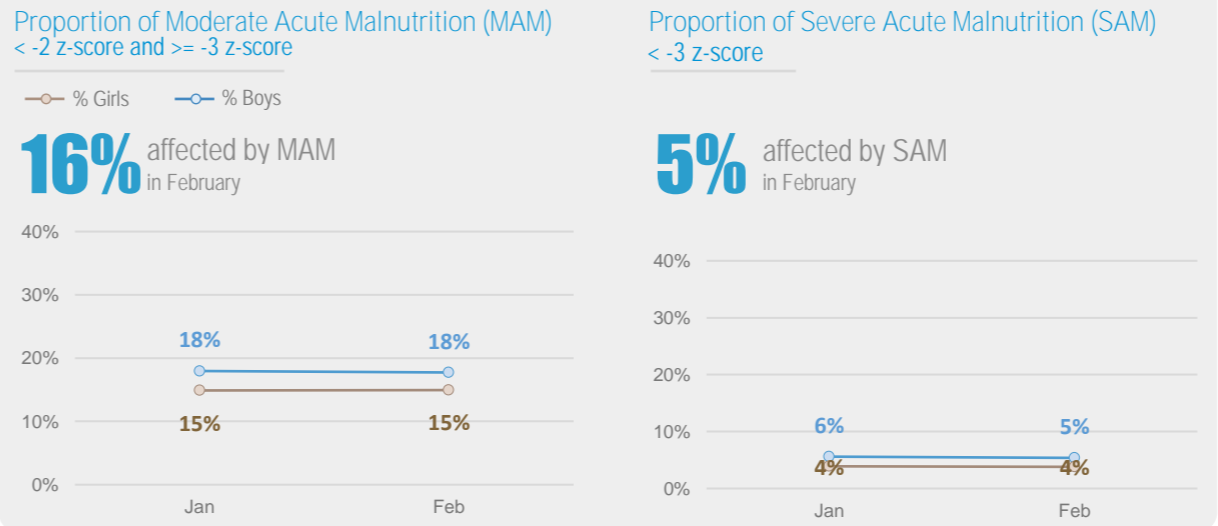
Governorate	# of Screened Children (0 - 5)	# of Screened Children (6 - 59)	Proportion of GAM (0 - 5)	Acute Malnutrition by Z- Score				Acute Malnutrition by MUAC				Underweight		Stunting		Exclusive Breastfeeding		Anemia		Oedema	
				# of MAM	Proportion of MAM	# of SAM	Proportion of SAM	# of MAM	Proportion of MAM	# of SAM	Proportion of SAM	# of Underweight	Proportion of Under weight	# of Stunting	Proportion of Stunting	# of EBF	Proportion of EBF (Yes)	# of Anemia	Proportion of Anemia	# of Oedema	Proportion of Oedema
Al Bayda	550	1,297	10.9%	175	13%	61	5%	145	11%	43	3%	742	40%	537	41%	221	39%	12	4%	0	0.0%
Al Dhale'e	197	563	16.8%	98	17%	24	4%	72	13%	27	5%	290	38%	202	36%	37	18%	11	3%	0	0.0%
Al Hudaydah	1,823	4,832	15.0%	1,331	28%	462	10%	1,325	27%	611	13%	3,793	57%	2,753	57%	110	5%	2,084	44%	1	0.0%
Al Jawf	160	1,519	21.3%	184	12%	64	4%	141	9%	46	3%	660	39%	625	41%	39	22%	341	22%	0	0.0%
Al Mahwit	1,020	3,300	11.7%	474	14%	95	3%	365	11%	86	3%	1,679	39%	1,490	45%	240	21%	827	25%	0	0.0%
Amanat Al Asimah	1,487	3,766	0.0%	663	18%	161	4%	372	10%	80	2%	2,132	41%	1,419	38%	230	14%	268	9%	2	0.0%
Amran	1,091	3,812	11.7%	494	13%	128	3%	639	17%	161	4%	2,040	42%	2,044	54%	164	13%	926	24%	2	0.0%
Dhahar	547	3,890	13.2%	573	15%	149	4%	746	19%	188	5%	2,045	46%	1,936	50%	81	13%	393	10%	4	0.1%
Hadramaut	844	998	13.2%	116	12%	35	4%	61	6%	18	2%	386	21%	212	21%	183	22%	236	58%	0	0.0%
Hajjah	1,566	5,776	7.9%	504	9%	130	2%	474	8%	134	2%	2,723	37%	2,519	44%	210	12%	920	16%	9	0.1%
Ibb	1,688	4,702	20.9%	965	21%	294	6%	703	15%	218	5%	3,014	47%	2,044	43%	284	15%	354	9%	17	0.3%
Lahj	324	695	0.0%	132	19%	30	4%	108	16%	25	4%	393	39%	219	32%	147	42%	217	32%	0	0.0%
Marib	69	474	1.4%	67	14%	28	6%	70	15%	35	7%	191	35%	155	33%	20	27%	20	8%	1	0.2%
Raymah	406	2,414	24.1%	348	14%	50	2%	364	15%	59	2%	1,638	58%	1,585	66%	49	11%	510	21%	2	0.1%
Sa'ada	593	3,718	19.4%	604	16%	207	6%	710	19%	245	7%	2,185	51%	1,956	53%	137	20%	715	19%	4	0.1%
Sana'a	719	3,488	12.7%	523	15%	114	3%	422	12%	102	3%	1,612	38%	1,454	42%	139	17%	140	5%	0	0.0%
Taizz	1,352	3,665	14.6%	737	20%	208	6%	568	15%	141	4%	2,239	45%	1,651	45%	134	9%	583	16%	2	0.0%



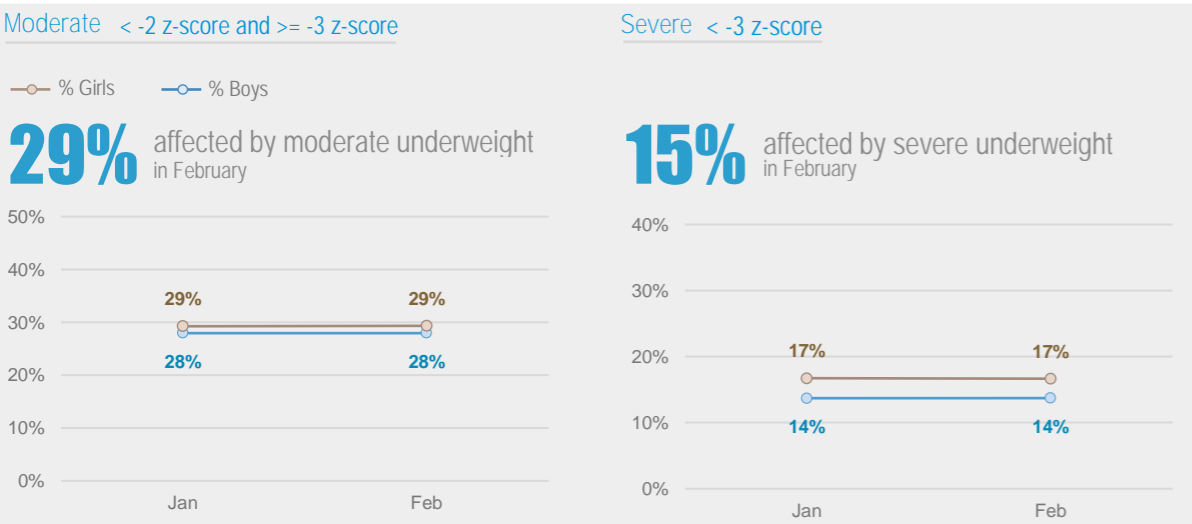
Acute Malnutrition by MUAC / Gender (Monthly Trend)



Acute Malnutrition by Weight/Height Z Score (WHZ) / Gender (Monthly Trend)



Underweight by Weight/Age Z Score / Gender (Monthly Trend)



Chronic Malnutrition (Stunting) by Height/Age Z Score / Gender (Monthly Trend)

