

Screened Children 2023

176,474

Key Figures Feb 2023



84,133

Screened Children (0 - 59 months) in Feb



21%

Screened Children (Under 6 months)



22%

GAM (WHZ) (6 - 59 months)



48%

Stunting (6 - 59 months)



19%

Anemia (6 - 59 months)



46%

Underweight (0 - 59 months)



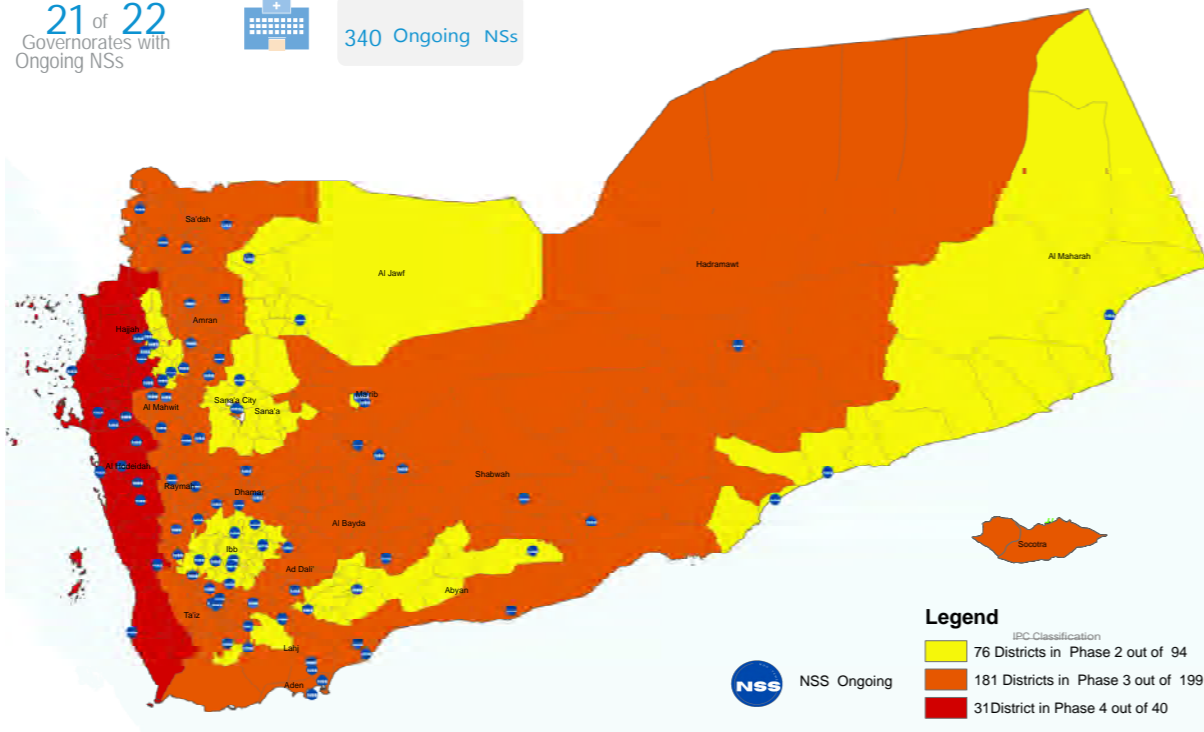
15%

Exclusive Breastfeeding (0 - 6 months)

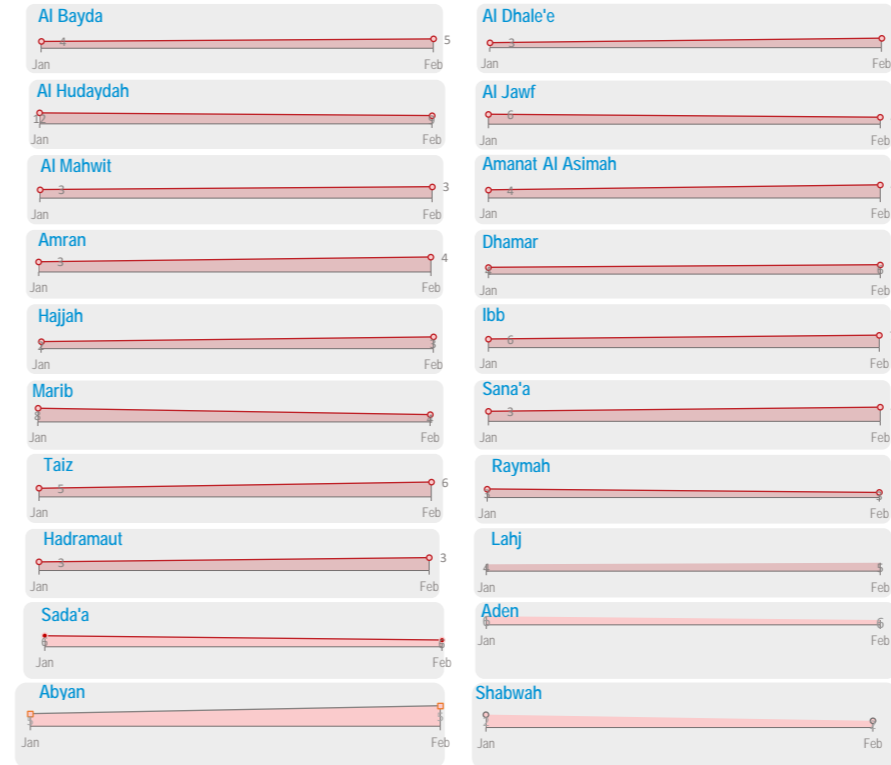
Geographical Presence of Nutrition Sentinel Sites

21 of 22 Governorates with Ongoing NSS

340 Ongoing NSS



Proportion † of Severe Acute Malnutrition (SAM) Monthly Trend Reporting per Gov

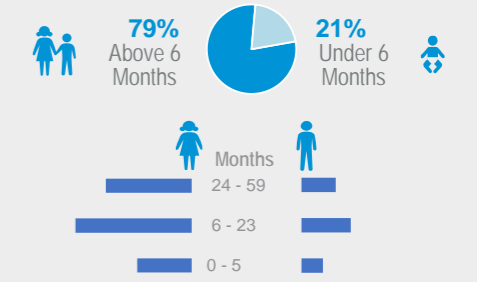


Screened Children Feb

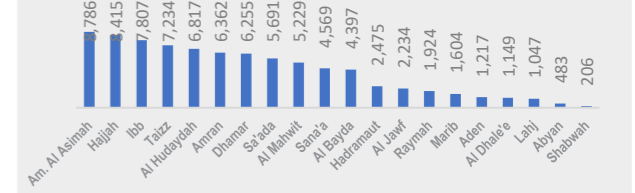
84,133 Screened Children



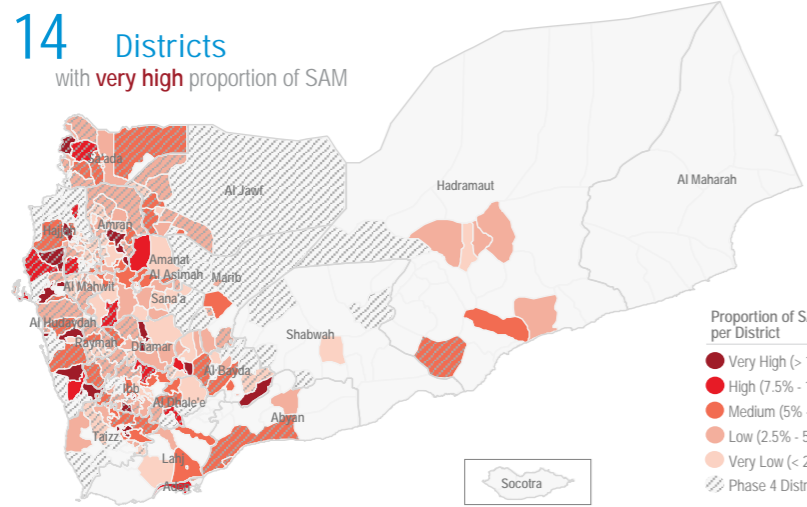
Screened Children by age group



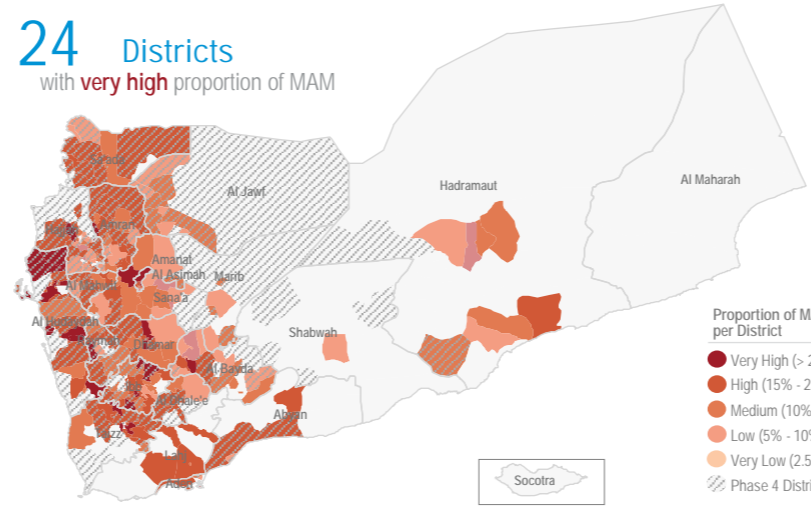
Screened Children per Governorate



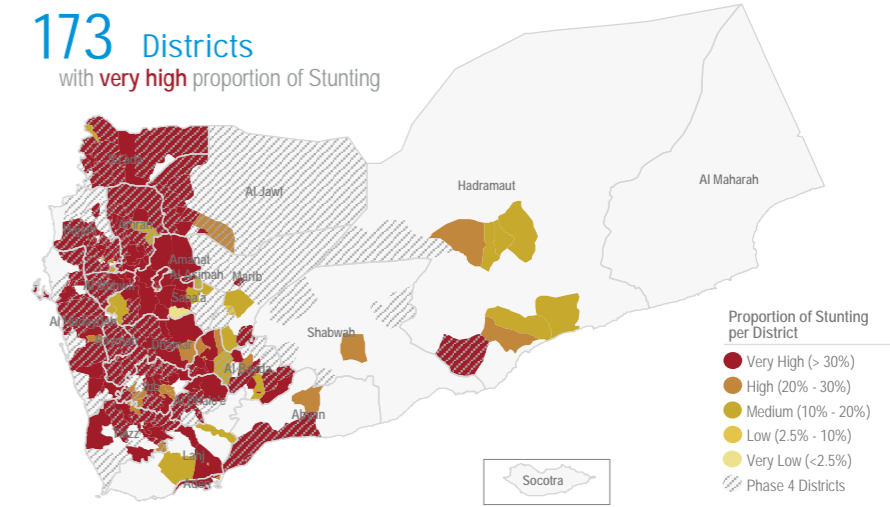
Proportion † of Severe Acute Malnutrition (SAM)\* Feb



Proportion † of Moderate Acute Malnutrition (MAM)\* Feb



Proportion † of Stunting Feb



Objectives of the Yemen Nutrition Surveillance System

Monitor children nutritional status, early detection of malnutrition and case referral. Share information and trigger alert verification..

Methodology

Nutritional assessment in NSS is normally performed through the measurement of child's weigh,height/length, MUAC, age, hemoglobin level, breastfeeding status and oedema. It is Facility-based surveillance system, established mainly in district hospitals across the country.

The system provides proportion of children under five years found suffering from any forms of malnutrition, out of the total children screened. It is not a formal survey using sampling methods to produce representative results.

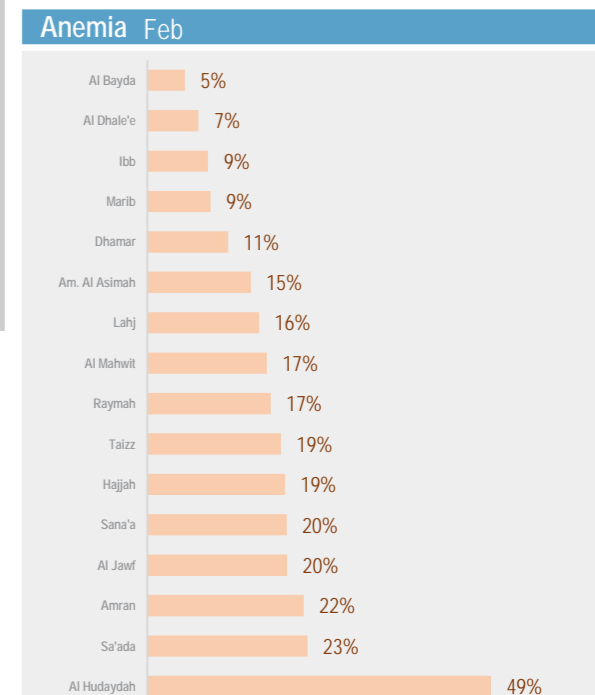
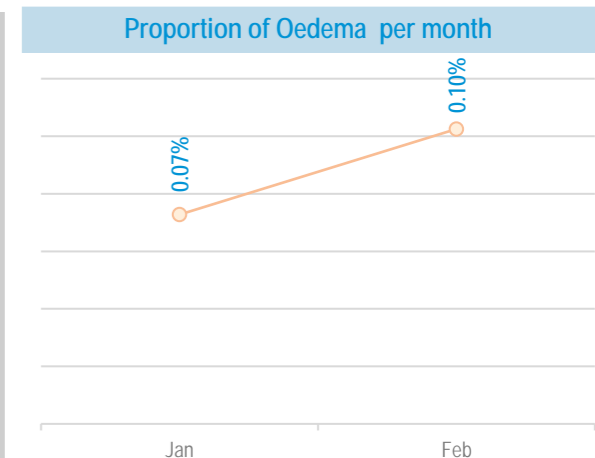
The results only reflect the status of children who have attended the health facility in the month under review. The system tracks Global core nutrition indicators: Stunting, Wasting, Exclusive breastfeeding and Anemia. This bulletin is based on reports received by the health facility surveillance MoPHP teams\*.

WHO supports the MoPHP and constantly works to expand coverage and improve data quality, funded by World Bank.

Additional screening of 12,543 children via mobile teams and pediatric wards integrated with TFC to ensure assessment of children in remote areas is conducted with ensuring to refer children with malnutrition forms to the nearest nutrition services to continue receiving treatment and follow up

Summary for Nutrition Indicators Feb 2023 in Reporting Gov

Governorate	# of Screened Children (0 - 5)	# of Screened Children (6 - 59)	Proportion of GAM (0 - 5)	Acute Malnutrition by Z- Score				Acute Malnutrition by MUAC				Underweight		Stunting		Exclusive Breastfeeding		Anemia		Oedema	
				# of MAM	Proportion of MAM	# of SAM	Proportion of SAM	# of MAM	Proportion of MAM	# of SAM	Proportion of SAM	# of Underweight	Proportion of Under weight	# of Stunting	Proportion of Stunting	# of EBF	Proportion of EBF (Yes)	# of Anemia	Proportion of Anemia	# of Oedema	Proportion of Oedema
Al Bayda	841	3,556	8.9%	399	11%	195	5%	331	9%	123	3%	1,542	35%	1,355	38%	159	18%	73	5%	3	0.1%
Al Dhale'e	202	947	7.4%	138	15%	54	6%	152	16%	53	6%	505	44%	452	48%	62	30%	36	7%	0	0.0%
Al Hudaydah	1,675	5,142	16.5%	1,382	27%	468	9%	1,401	27%	556	11%	3,884	57%	2,891	56%	81	5%	2,487	49%	4	0.1%
Al Jawf	310	1,924	12.6%	194	10%	81	4%	151	8%	58	3%	830	37%	771	40%	106	32%	376	20%	2	0.1%
Al Mahwit	1,090	4,139	10.6%	659	16%	131	3%	624	15%	107	3%	2,268	43%	2,027	49%	183	16%	699	17%	1	0.0%
Amanat Al Asimah	1,988	6,798	23.1%	1,289	19%	274	4%	696	10%	168	2%	3,898	44%	3,179	47%	275	13%	887	15%	0	0.0%
Amran	1,253	5,109	11.0%	829	16%	225	4%	1,014	20%	232	5%	2,915	46%	2,599	51%	197	15%	1,129	22%	2	0.0%
Dhahar	1,158	5,097	14.3%	866	17%	281	6%	1,135	22%	395	8%	3,294	53%	2,824	55%	160	13%	527	11%	17	0.3%
Hadramaut	1,131	1,344	10.5%	152	11%	47	3%	85	6%	25	2%	470	19%	257	19%	296	25%	100	33%	0	0.0%
Hajjah	1,752	6,663	7.7%	882	13%	222	3%	957	14%	280	4%	3,866	46%	3,380	51%	213	12%	1,295	19%	2	0.0%
Ibb	1,843	5,964	19.8%	1,351	23%	411	7%	1,049	18%	283	5%	4,031	52%	2,891	48%	257	13%	511	9%	42	0.5%
Lahj	226	821	15.5%	127	15%	40	5%	79	10%	26	3%	430	41%	216	26%	41	17%	126	16%	2	0.2%
Marib	175	1,429	12.6%	161	11%	61	4%	114	8%	33	2%	502	31%	415	29%	76	40%	98	9%	3	0.2%
Raymah	304	1,620	16.8%	253	16%	42	3%	253	16%	47	3%	1,138	59%	992	61%	16	5%	282	17%	1	0.1%
Sa'ada	670	5,021	13.9%	877	17%	282	6%	1,066	21%	344	7%	2,849	50%	2,698	54%	143	20%	1,090	23%	4	0.1%
Sana'a	698	3,871	15.6%	542	14%	164	4%	426	11%	141	4%	1,891	41%	1,640	42%	188	25%	353	10%	1	0.0%
Aden	481	736	23.1%	138	19%	41	6%	98	13%	15	2%	463	38%	252	34%	-	-	0	0%	1	0.0%
Taizz	1,538	5,696	12.4%	1,199	21%	326	6%	966	17%	193	3%	3,464	48%	2,550	45%	145	9%	1,042	19%	1	0.0%
Abyan	88	395	19.3%	63	16%	21	5%	29	7%	3	1%	158	33%	142	36%	-	-	15	0%	0	0.0%
Shabwah	36	170	27.8%	14	8%	3	2%	7	4%	2	1%	52	25%	49	29%	-	-	113	0%	0	0.0%

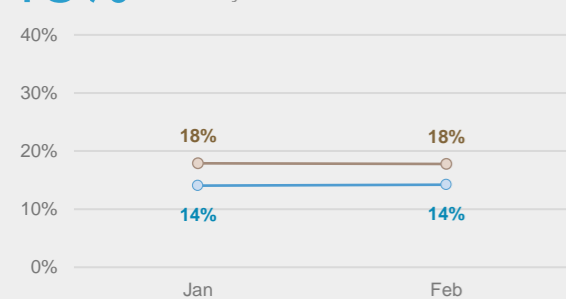


Acute Malnutrition by MUAC / Gender (Monthly Trend)

Proportion of Moderate Acute Malnutrition (MAM) < 125 mm and >= 115 mm

— % Girls — % Boys

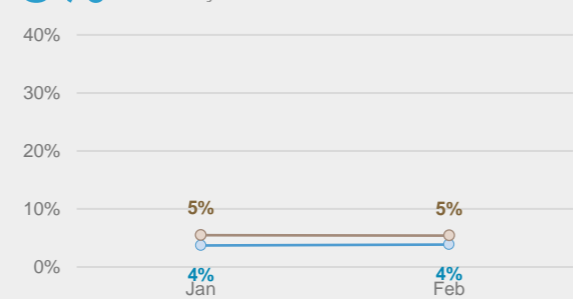
16% affected by MAM in February



Proportion of Severe Acute Malnutrition (SAM) < 115 mm

— % Girls — % Boys

5% affected by SAM in February

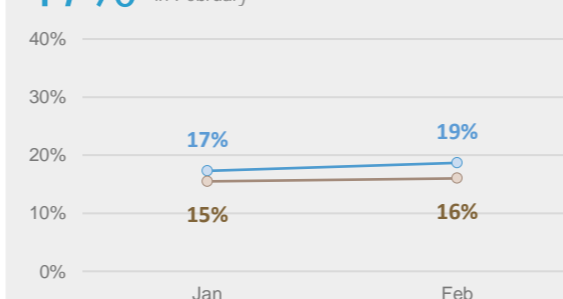


Acute Malnutrition by Weight/Height Z Score (WHZ) / Gender (Monthly Trend)

Proportion of Moderate Acute Malnutrition (MAM) < -2 z-score and >= -3 z-score

— % Girls — % Boys

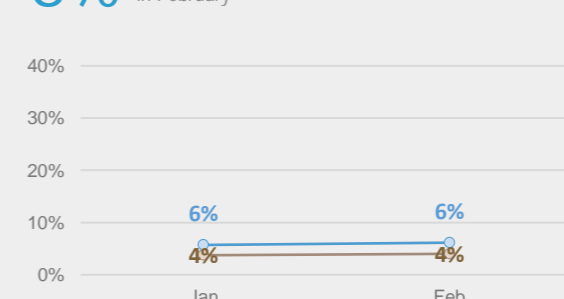
17% affected by MAM in February



Proportion of Severe Acute Malnutrition (SAM) < -3 z-score

— % Girls — % Boys

5% affected by SAM in February

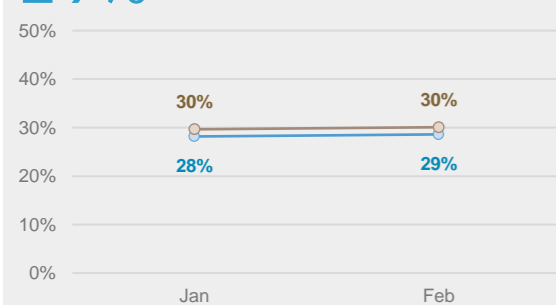


Underweight by Weight/Age Z Score / Gender (Monthly Trend)

Moderate < -2 z-score and >= -3 z-score

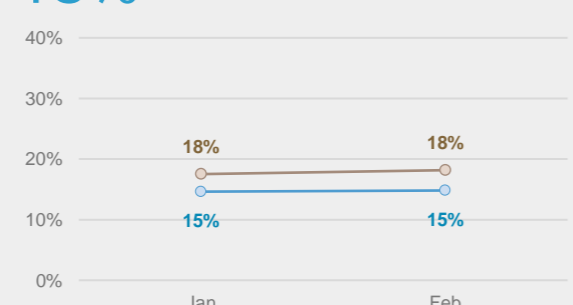
— % Girls — % Boys

29% affected by moderate underweight in February



Severe < -3 z-score

16% affected by severe underweight in February

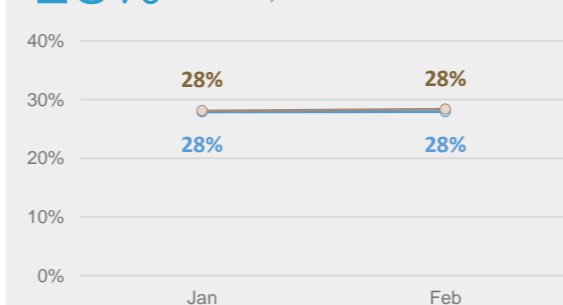


Chronic Malnutrition (Stunting) by Height/Age Z Score / Gender (Monthly Trend)

Moderate < -2 z-score and >= -3 z-score

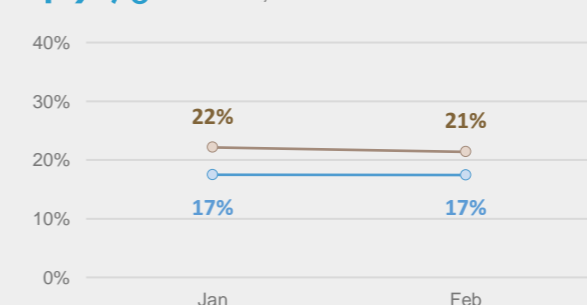
— % Girls — % Boys

28% affected by moderate stunting in February



Severe < -3 z-score

19% affected by severe stunting in February



Exclusive Breastfeeding Feb

