

Screened Children 2022

373,693

Key Figures Jun 2022



72,169

Screened Children (0 - 59 months) in Jun



21%

Screened Children (Under 6 months)



30%

GAM (WHZ) (6 - 59 months)



48%

Stunting (6 - 59 months)



23%

Anemia (6 - 59 months)



51%

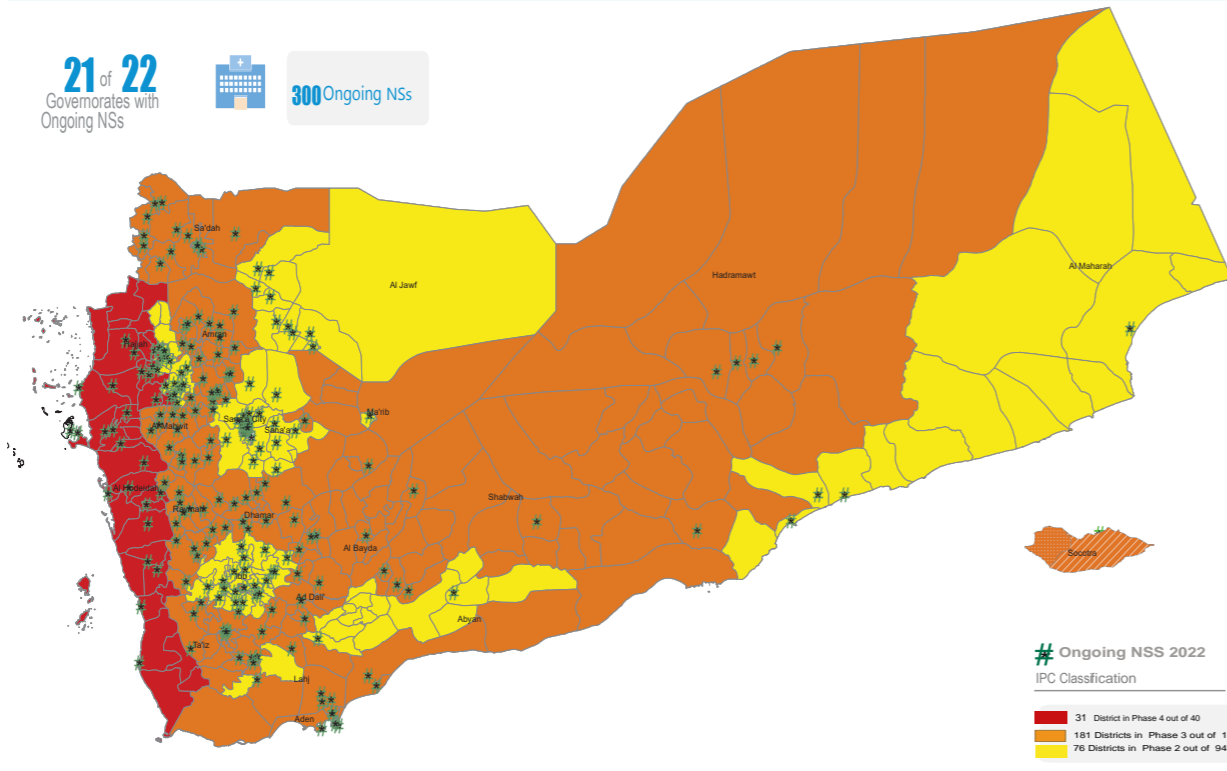
Underweight (0 - 59 months)



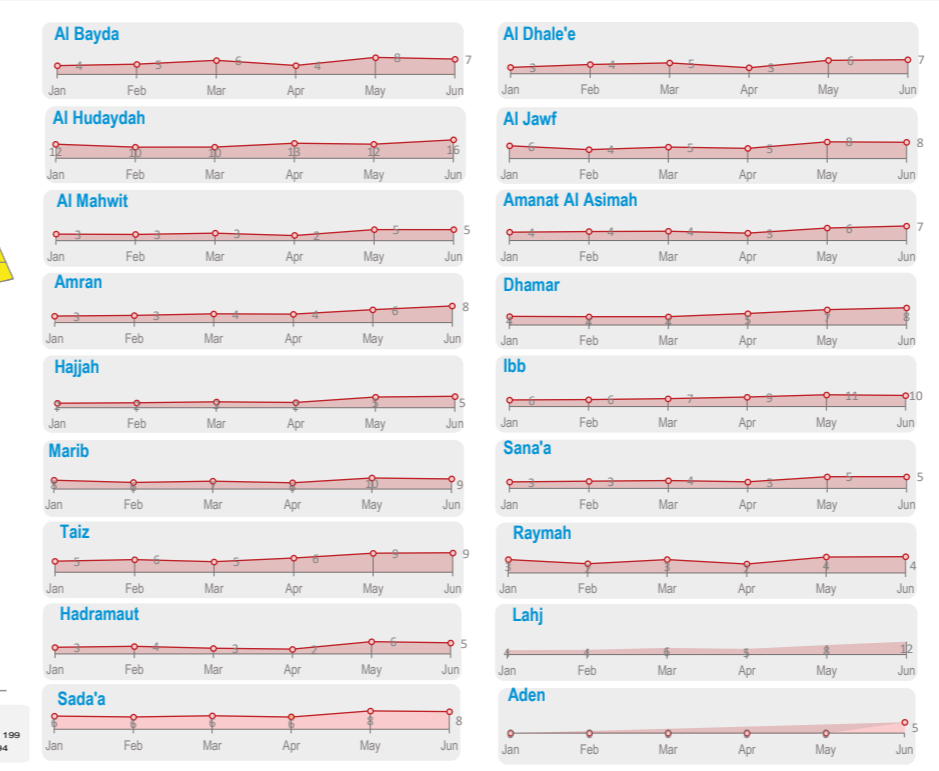
13%

Exclusive Breastfeeding (0 - 6 months)

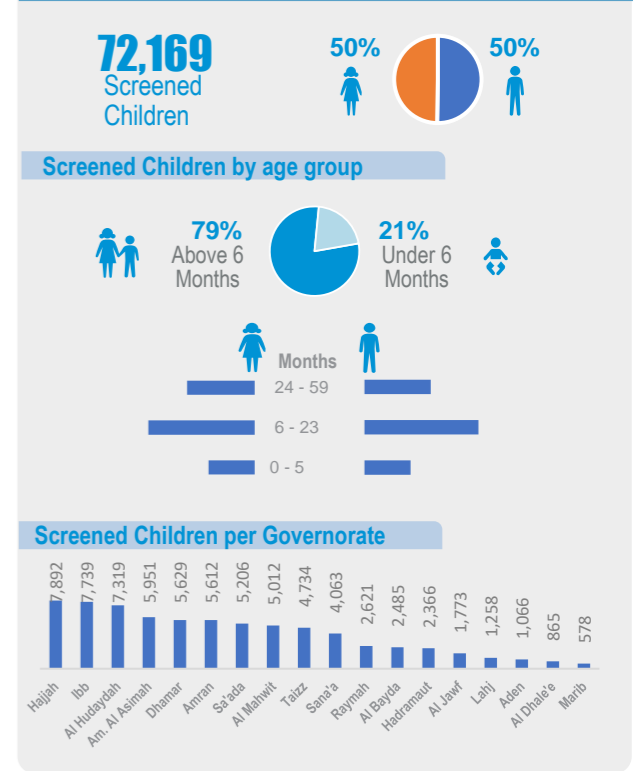
Geographical Presence of Nutrition Sentinel Sites



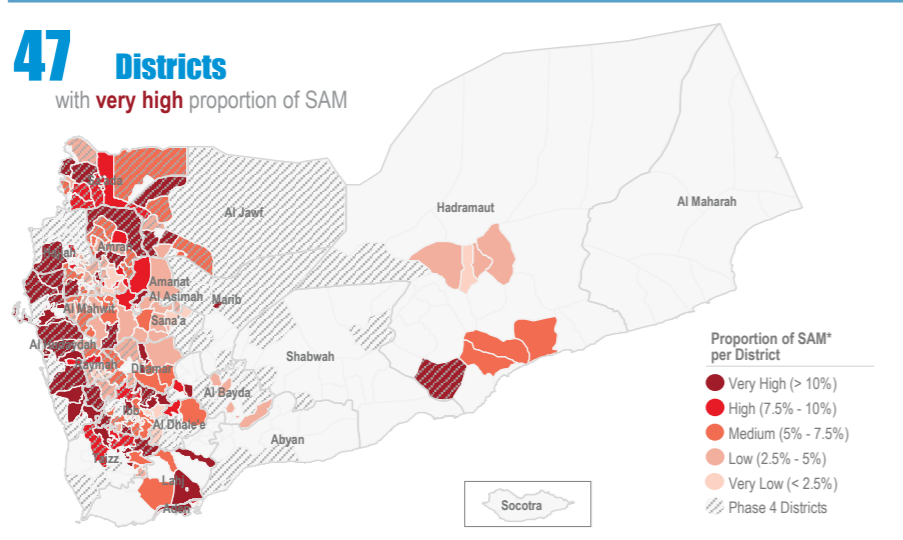
Proportion † of Severe Acute Malnutrition (SAM) Monthly Trend Reporting per Gov



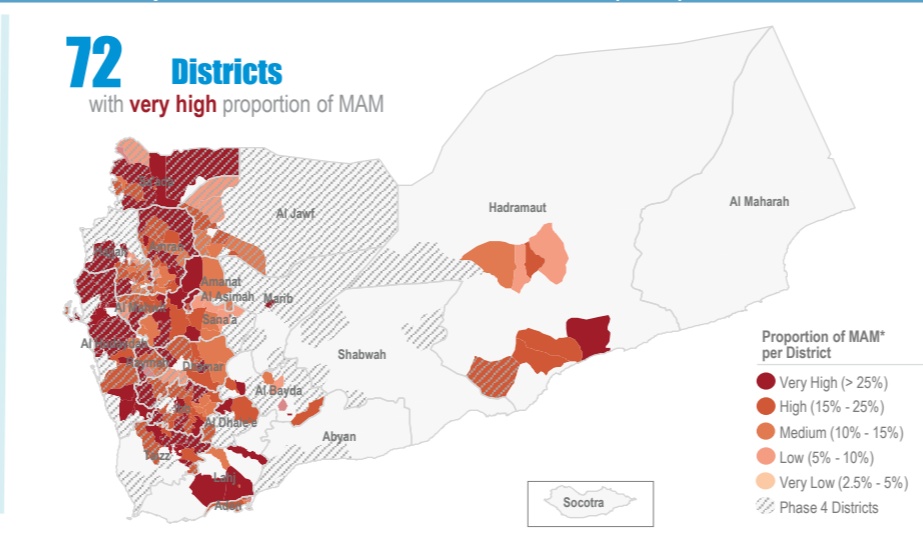
Screened Children Jun



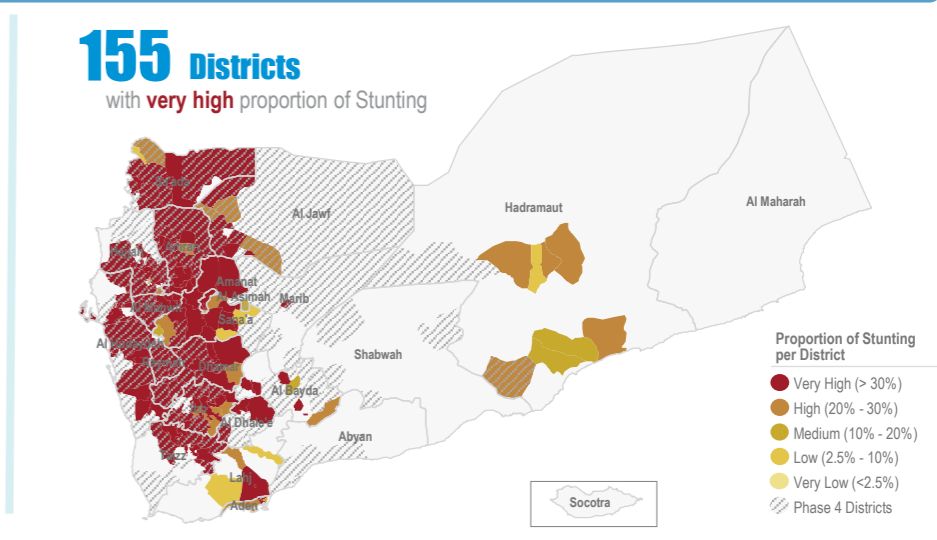
Proportion † of Severe Acute Malnutrition (SAM)* Jun



Proportion † of Moderate Acute Malnutrition (MAM)* Jun



Proportion † of Stunting Jun



Objectives of the Yemen Nutrition Surveillance System

Monitor children nutritional status, early detection of malnutrition and case referral. Share information and trigger alert verification.

Methodology

Nutritional assessment in NSS is normally performed through the measurement of child's weigh, height/length, MUAC, age, hemoglobin level, breastfeeding status and oedema.

It is Facility-based surveillance system, established mainly in district hospitals across the country.

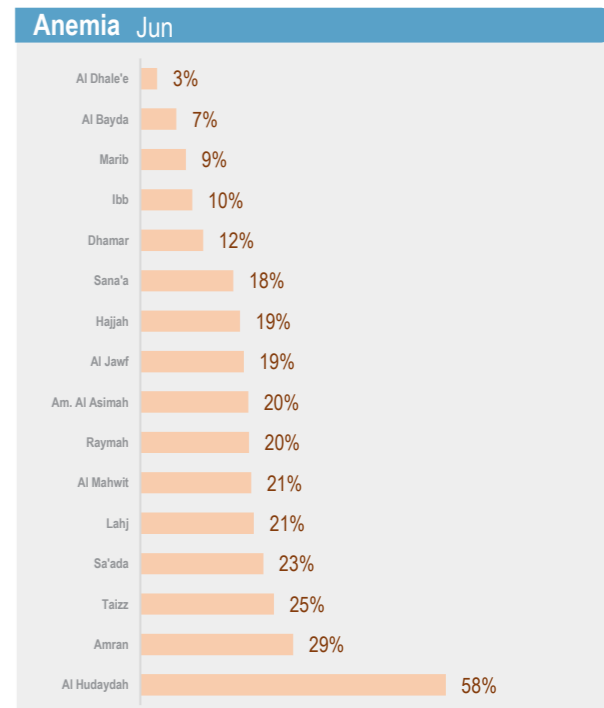
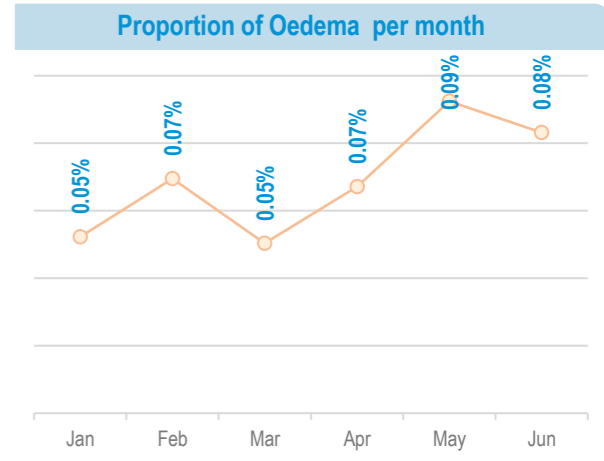
The system provides proportion of children under five years found suffering from any forms of malnutrition, out of the total children screened. It is not a formal survey using sampling methods to produce representative results.

The results only reflect the status of children who have attended the health facility in the month under review. The system tracks Global core nutrition indicators: Stunting, Wasting, Exclusive breastfeeding and Anemia. This bulletin is based on reports received by the health facility surveillance MoPHP teams*.

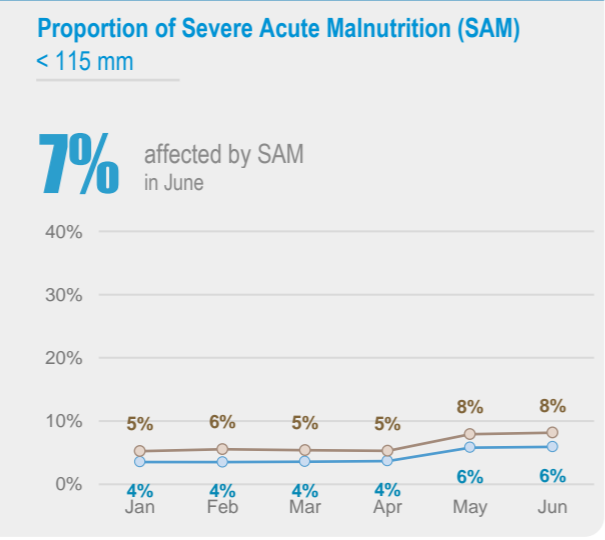
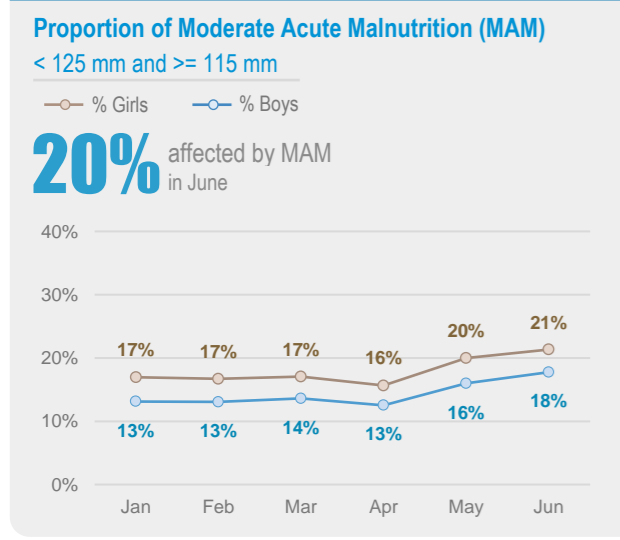
WHO supports the MoPHP and constantly works to expand coverage and improve data quality, funded by World Bank.

Summary for Nutrition Indicators Jun 2022 in Reporting Gov

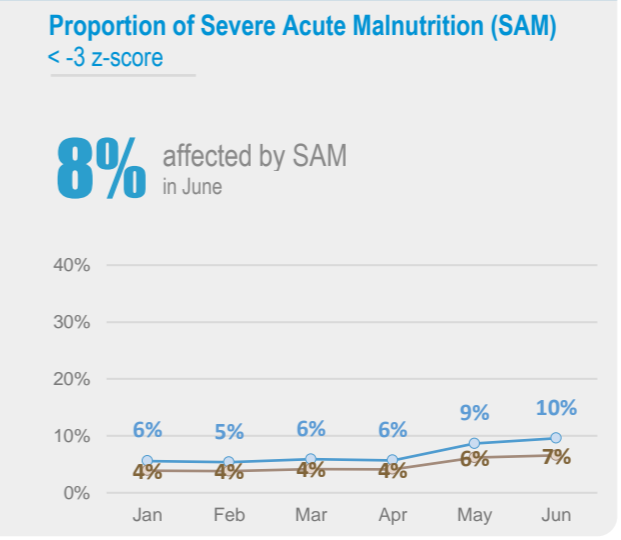
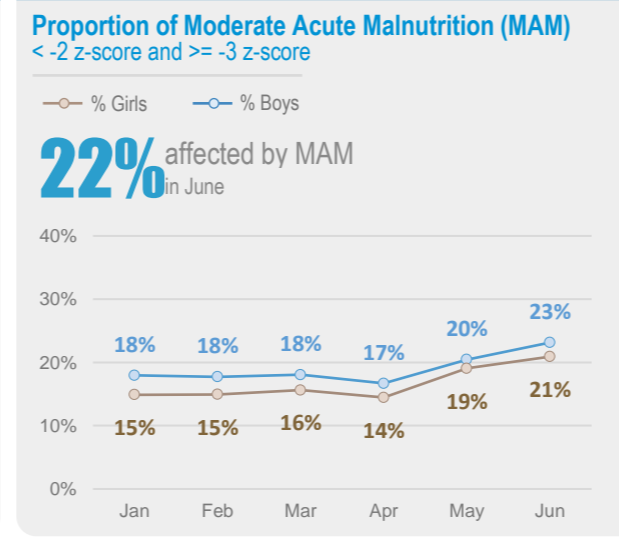
Governorate	# of Screened Children (0 - 5)	# of Screened Children (6 - 59)	Proportion of GAM (0 - 5)	Acute Malnutrition by Z- Score				Acute Malnutrition by MUAC				Underweight		Stunting		Exclusive Breastfeeding		Anemia		Oedema	
				# of MAM	Proportion of MAM	# of SAM	Proportion of SAM	# of MAM	Proportion of MAM	# of SAM	Proportion of SAM	# of Underweight	Proportion of Under weight	# of Stunting	Proportion of Stunting	# of EBF	Proportion of EBF (Yes)	# of Anemia	Proportion of Anemia	# of Oedema	Proportion of Oedema
Al Bayda	767	1,718	20.2%	328	19%	119	7%	226	13%	90	5%	1,104	44%	690	40%	169	21%	65	7%	0	0.0%
Al Dhale'e	143	722	28.0%	175	24%	47	7%	135	19%	43	6%	448	52%	314	43%	28	18%	18	3%	0	0.0%
Al Hudaydah	1,063	6,256	25.1%	2,045	33%	990	16%	2,077	33%	915	15%	4,898	67%	3,401	54%	44	4%	3,579	58%	0	0.0%
Al Jawf	285	1,488	22.1%	219	15%	114	8%	177	12%	73	5%	693	39%	539	36%	70	23%	288	19%	3	0.2%
Al Mahwit	1,160	3,852	18.2%	731	19%	194	5%	584	15%	165	4%	2,218	44%	1,951	51%	138	11%	804	21%	0	0.0%
Amanat Al Asimah	1,533	4,418	17%	1,006	23%	304	7%	539	12%	146	3%	2,878	48%	1,849	42%	220	13%	834	20%	0	0.0%
Amran	1,207	4,405	16.7%	869	20%	336	8%	973	22%	382	9%	2,924	52%	2,431	55%	183	14%	1,268	29%	3	0.1%
Dhahar	1,156	4,473	17.5%	925	21%	352	8%	1,204	27%	438	10%	3,322	59%	2,783	62%	134	11%	525	12%	10	0.2%
Hadramaut	915	1,451	-	233	16%	72	5%	104	7%	32	2%	606	26%	312	22%	123	13%	209	46%	0	0.0%
Hajjah	1,341	6,551	12.5%	1,056	16%	332	5%	995	15%	317	5%	3,678	47%	3,051	47%	132	9%	1,227	19%	1	0.0%
Ibb	1,816	5,923	25.4%	1,520	26%	590	10%	1,172	20%	426	7%	4,159	54%	2,723	46%	237	12%	537	10%	39	0.5%
Lahj	294	964	-	257	27%	113	12%	167	17%	57	6%	602	48%	230	24%	54	17%	206	21%	0	0.0%
Marib	50	528	24.0%	130	25%	49	9%	145	27%	79	15%	298	52%	223	42%	11	21%	21	9%	0	0.0%
Raymah	367	2,254	22.6%	426	19%	83	4%	408	18%	108	5%	1,558	59%	1,476	65%	18	5%	461	20%	0	0.0%
Sa'ada	655	4,551	26.1%	1,024	23%	361	8%	1,012	22%	428	9%	2,855	55%	2,290	50%	79	11%	1,041	23%	1	0.0%
Sana'a	662	3,401	19.6%	596	18%	185	5%	476	14%	115	3%	1,703	42%	1,288	38%	101	14%	263	9%	0	0.0%
Aden	370	696	-	136	20%	57	8%	96	14%	25	4%	368	35%	185	27%	209	17%	-	-	0	0.0%
Taizz	1,132	3,602	20.7%	933	26%	317	9%	709	20%	195	5%	2,342	49%	1,534	43%	104	8%	905	25%	3	0.1%



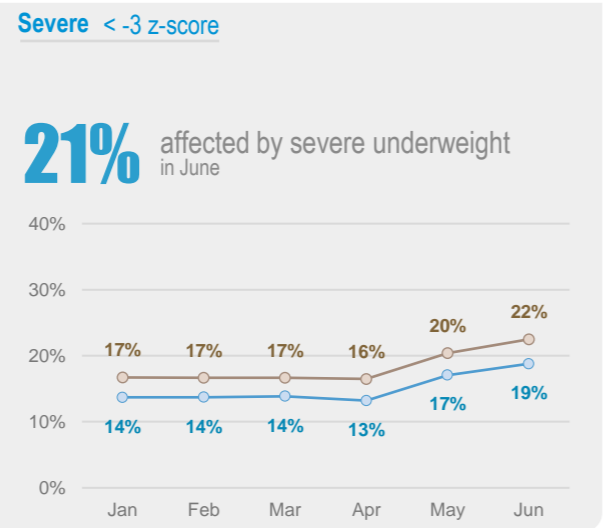
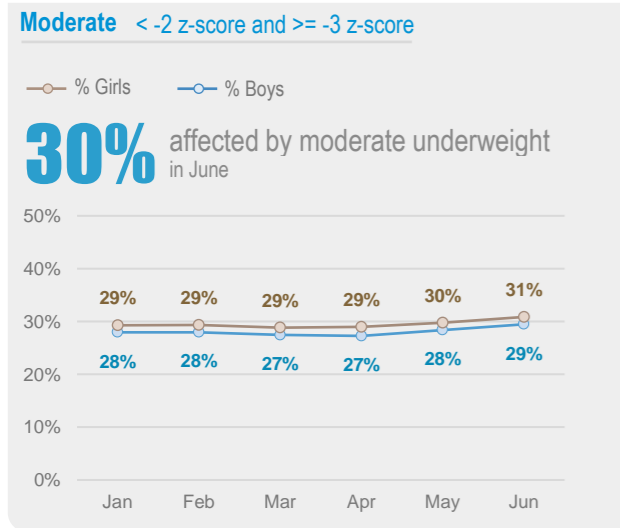
Acute Malnutrition by MUAC / Gender (Monthly Trend)



Acute Malnutrition by Weight/Height Z Score (WHZ) / Gender (Monthly Trend)



Underweight by Weight/Age Z Score / Gender (Monthly Trend)



Chronic Malnutrition (Stunting) by Height/Age Z Score / Gender (Monthly Trend)

