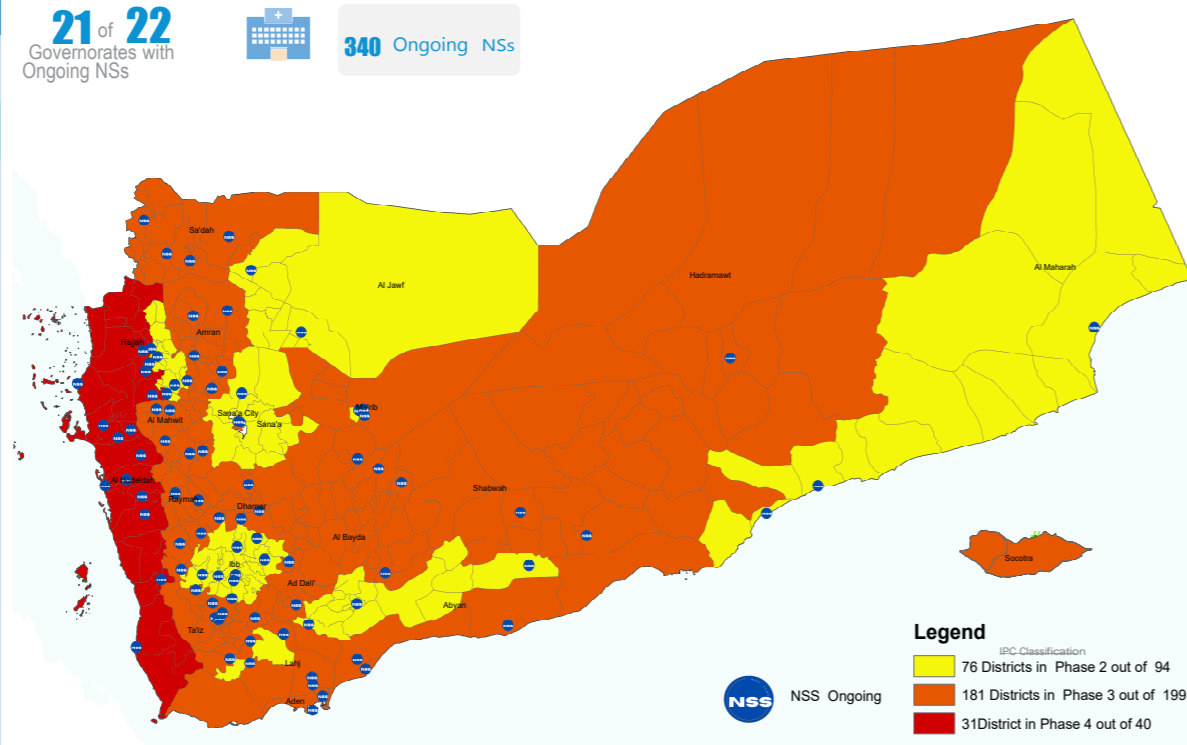


Screened Children 2023
480,809

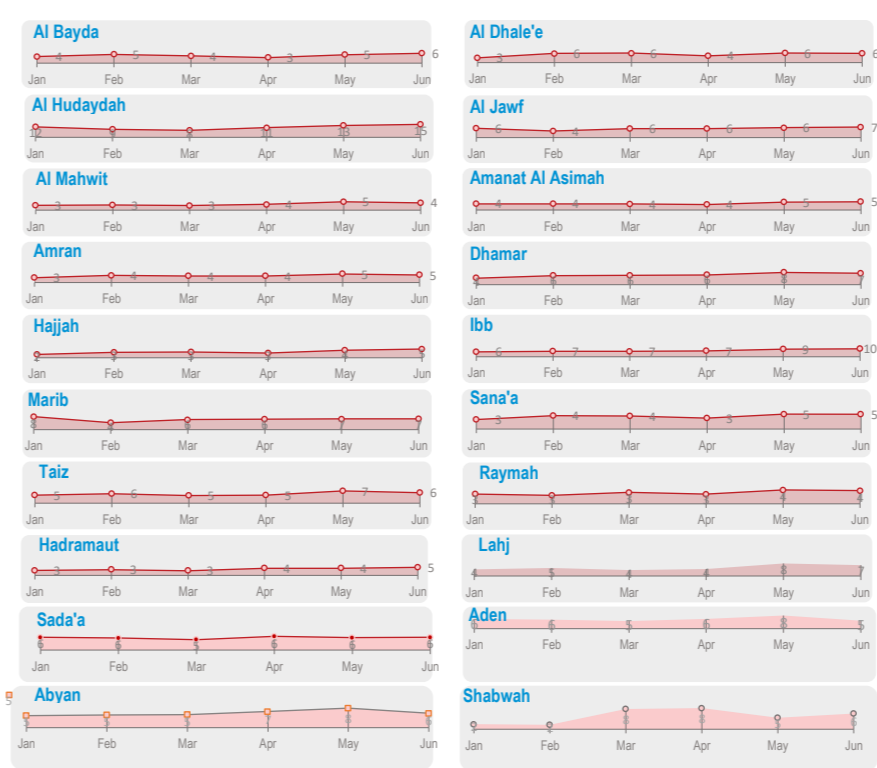
Key Figures Jun 2023

- 76,967 Screened Children (0 - 59 months) in Jun
- 21% Screened Children (Under 6 months)
- 27% GAM (WHZ) (6 - 59 months)
- 45% Stunting (6 - 59 months)
- 20% Anemia (6 - 59 months)
- 49% Underweight (0 - 59 months)
- 15% Exclusive Breastfeeding (0 - 6 months)

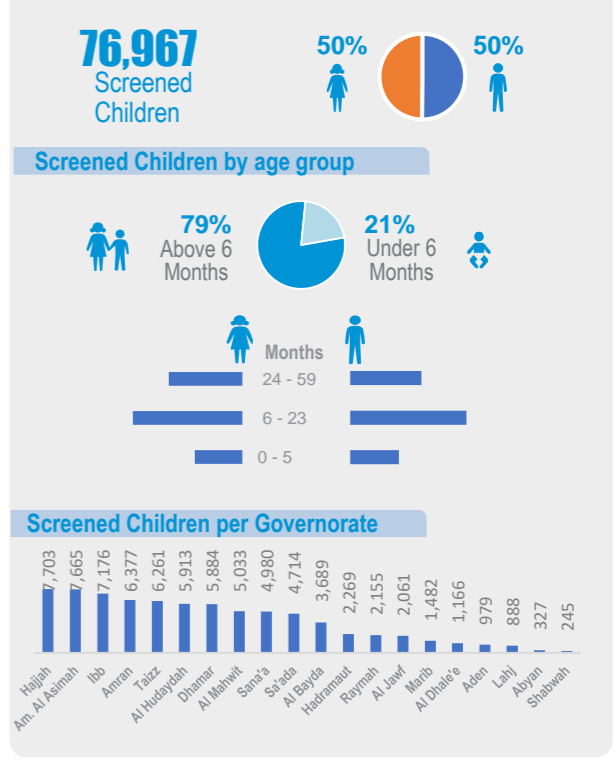
Geographical Presence of Nutrition Sentinel Sites



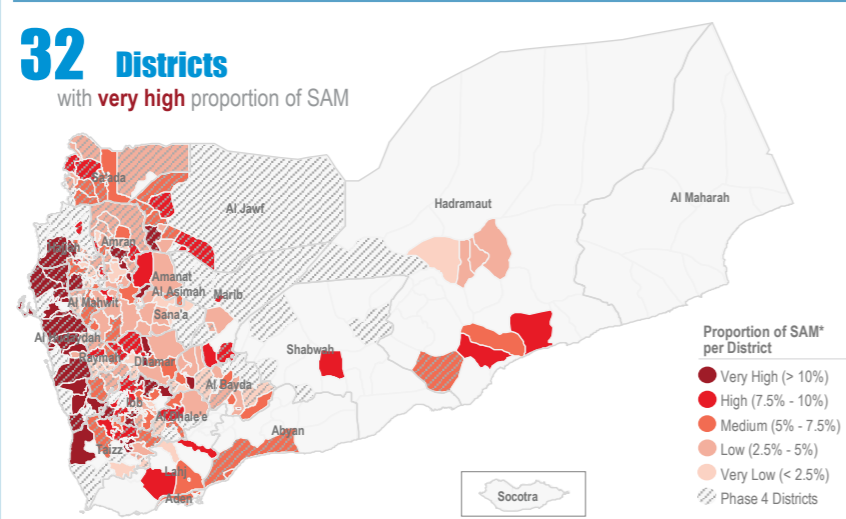
Proportion † of Severe Acute Malnutrition (SAM) Monthly Trend Reporting per Gov



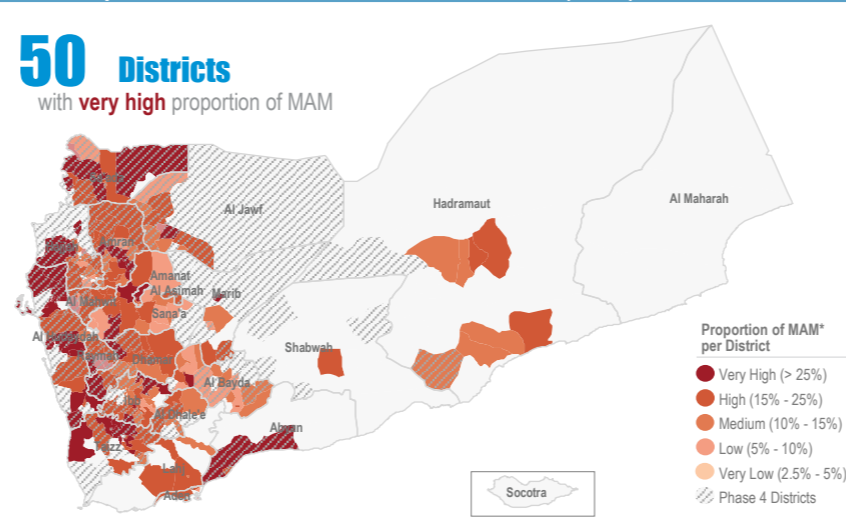
Screened Children Jun



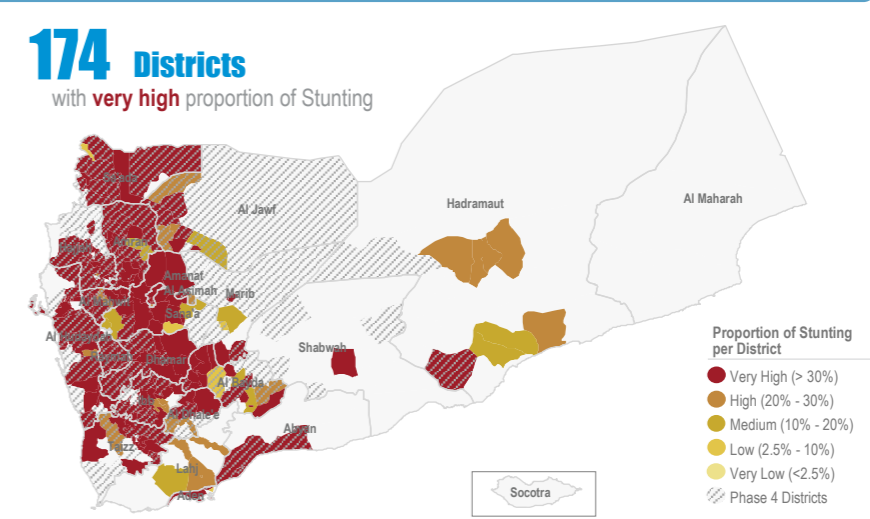
Proportion † of Severe Acute Malnutrition (SAM)* Jun



Proportion † of Moderate Acute Malnutrition (MAM)* Jun



Proportion † of Stunting Jun



Objectives of the Yemen Nutrition Surveillance System

Monitor children nutritional status, early detection of malnutrition and case referral. Share information and trigger alert verification..

Methodology

Nutritional assessment in NSS is normally performed through the measurement of child's weigh,height/length, MUAC, age,hemoglobin level, breastfeeding status and oedema.It is Facility-based surveillance system, established mainly in district hospitals across the country.

The system provides proportion of children under five years found suffering from any forms of malnutrition, out of the total children screened. It is not a formal survey using sampling methods to produce representative results.

The results only reflect the status of children who have attended the health facility in the month under review.The system tracks Global core nutrition indicators: Stunting, Wasting, Exclusive breastfeeding and Anemia.This bulletin is based on reports received by the health facility surveillance MoPHP teams*.

WHO supports the MoPHP and constantly works to expand coverage and improve data quality, funded by World Bank.

Additional screening of 35,873 children via mobile teams and pediatric wards integrated with TFC to ensure assessment of children in remote areas is conducted with ensuring to refer children with malnutrition forms to the nearest nutrition services to continue receiving treatment and follow up

Summary for Nutrition Indicators Jun 2023 in Reporting Gov

Governorate	# of Screened Children (0 - 5)	# of Screened Children (6 - 59)	Proportion of GAM (0 - 5)	Acute Malnutrition by Z- Score				Acute Malnutrition by MUAC				Underweight		Stunting		Exclusive Breastfeeding		Anemia		Oedema	
				# of MAM	Proportion of MAM	# of SAM	Proportion of SAM	# of MAM	Proportion of MAM	# of SAM	Proportion of SAM	# of Underweight	Proportion of Underweight	# of Stunting	Proportion of Stunting	# of EBF	Proportion of EBF (Yes)	# of Anemia	Proportion of Anemia	# of Oedema	Proportion of Oedema
Al Bayda	795	2,894	13.6%	422	15%	176	6%	356	12%	114	4%	1,354	37%	1,098	38%	123	14%	240	10%	4	0.3%
Al Dhale'e	189	977	19.0%	181	19%	56	6%	175	18%	66	7%	575	49%	446	46%	57	29%	77	14%	1	0.2%
Al Hudaydah	1,018	4,895	23.7%	1,451	30%	727	15%	1,501	31%	663	14%	3,840	65%	2,715	55%	53	5%	2,430	50%	1	0.0%
Al Jawf	334	1,727	17.4%	254	15%	116	7%	219	13%	104	6%	844	41%	674	39%	74	20%	414	24%	0	0.0%
Al Mahwit	1,176	3,857	16.4%	619	16%	172	4%	538	14%	156	4%	2,321	46%	1,912	50%	172	14%	811	21%	2	0.1%
Amanat Al Asimah	1,874	5,791	23.3%	1,286	22%	308	5%	642	11%	172	3%	3,594	47%	2,681	46%	291	15%	662	13%	0	0.0%
Amran	1,252	5,125	16.4%	989	19%	242	5%	1,059	21%	264	5%	3,134	49%	2,609	51%	220	16%	1,081	21%	0	0.0%
Dhamar	1,185	4,699	22.6%	871	19%	329	7%	1,004	21%	437	9%	3,223	55%	2,638	56%	126	10%	591	13%	19	1.2%
Hadramaut	1,050	1,219	13.1%	215	18%	60	5%	94	8%	19	2%	534	24%	271	22%	254	23%	97	42%	0	0.0%
Hajjah	1,371	6,332	11.3%	967	15%	330	5%	944	15%	321	5%	3,766	49%	3,258	51%	107	7%	1,494	24%	2	0.1%
Ibb	1,814	5,362	22.9%	1,215	23%	520	10%	972	18%	362	7%	3,834	53%	2,627	49%	251	13%	911	17%	35	1.6%
Lahj	170	718	18.8%	117	16%	47	7%	75	10%	35	5%	370	42%	174	24%	29	16%	108	15%	1	0.2%
Marib	189	1,293	10.6%	227	18%	87	7%	168	13%	51	4%	549	37%	412	32%	80	39%	120	12%	2	0.3%
Raymah	303	1,852	23.1%	333	18%	74	4%	304	16%	77	4%	1,366	63%	1,167	63%	14	4%	260	14%	0	0.0%
Sa'ada	539	4,175	15.2%	912	22%	248	6%	932	22%	322	8%	2,593	55%	2,235	54%	157	25%	749	20%	1	0.1%
Sana'a	719	4,261	18.2%	722	17%	199	5%	533	13%	170	4%	2,178	44%	1,781	42%	151	19%	560	14%	2	0.1%
Aden	298	681	23.8%	155	23%	43	6%	88	13%	16	2%	381	39%	228	33%	144	47%	-	-	0	0.0%
Taizz	1,549	4,712	18.5%	1,118	24%	301	6%	796	17%	205	4%	3,141	50%	2,143	45%	301	18%	719	16%	2	0.1%
Abyan	31	296	35.5%	62	21%	18	6%	36	12%	6	2%	131	40%	111	38%	9	24%	-	-	0	0.0%
Shabwah	35	210	11.4%	41	20%	16	8%	31	15%	3	1%	95	39%	72	34%	1	3%	125	61%	0	0.0%

