

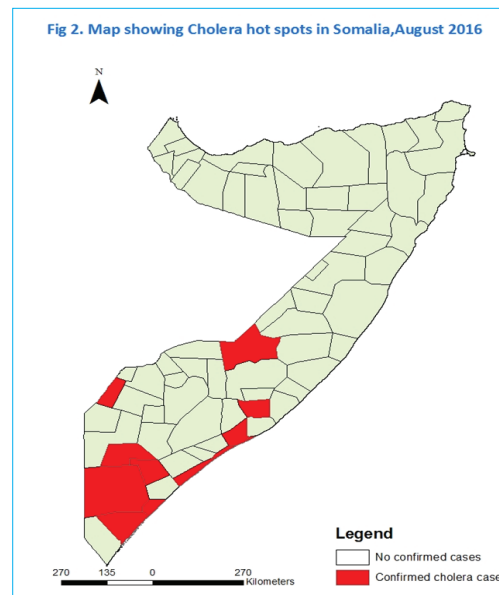
CHOLERA SITUATION IN SOMALIA

31ST AUGUST 2016

HIGHLIGHTS

- As of August 30th 2016, a total of 13,453 suspected cholera cases including 496 deaths (CFR 3.7%) have been reported in 25 districts in southern and central zones of Somalia. Of these cases 6378(47.5%) are women while 7791(57.9%) are children below 5 years.
- Of the 100 stool samples collected since January 2016, 45(45%) of them turned positive for *Vibrio cholera* Serotype "inaba" and "Ogawa".
- As shown in the epi-curve there has been a 63% reduction in the number of cases reported from different sites from 219 cases in week 30 to 82 cases in week 34.
- Active cases are still reported from Banadir, Belet-Hawo, Dhobley, Merka, Qoryoley, Shalanbood and Jowhar districts.
- As shown figure 3, majority of cases have been reported in Middle Juba (24.7%), Lower Juba(23.6%), Banadir (14.2%) and Hiraan (13.7%)
- Only one AWD/Cholera deaths was reported in Jowhar district middle Shabelle region.
- WHO and UNICEF supported the training of 56 national trainers for cholera case management, surveillance, Water, sanitation, hygiene and risk communication during this period.

DISTRICTS WITH CONFIRMED CHOLERA CASES AND ALERTS TILL AUGUST, 2016



SUMMARY STATISTICS

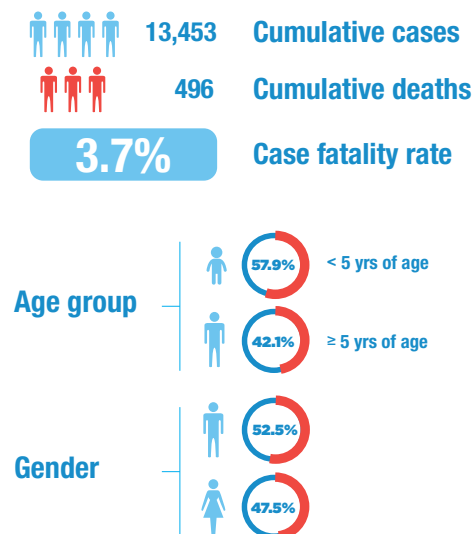


FIGURE 1: EPIDEMIC CURVE OF SUSPECTED AWD/CHOLERA CASES AND MORATLITY RATES IN SOMALIA EPI WEEK 1-34 (N=13,453). SOURCES FMOH/WHO SOMALIA

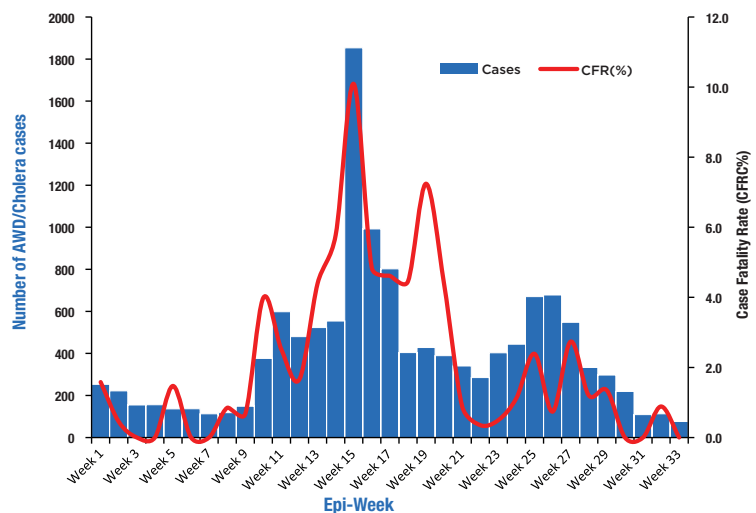
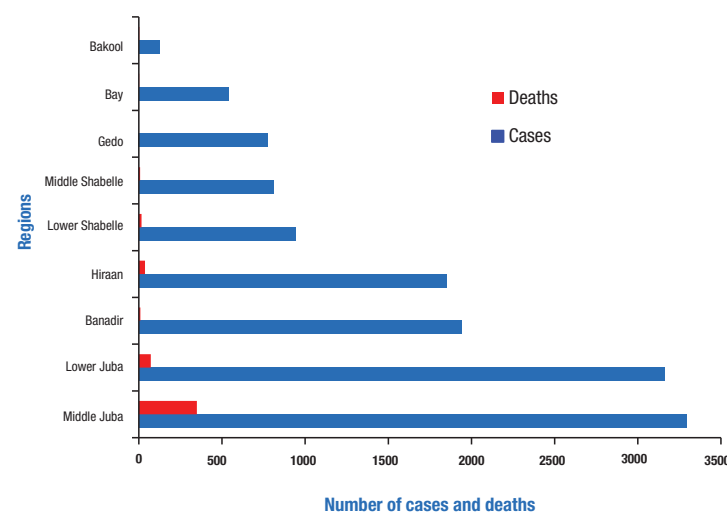


FIGURE 3: DISTRIBUTION OF AWD/CHOLERA CASES PER REGION IN SOMALIA, AUGUST 2016



ACTIVITIES DONE TO CONTAIN OUTBREAK

- Reviewed the first comprehensive cholera preparedness and response plan
- Trained 56 health workers from cholera affected regions in cholera case management
- Supported active surveillance, social mobilization and distribution of hygienic kits
- FMOH decided to introduce preemptive OCV campaigns in three hotspot districts.
- WHO and Health Cluster partners are supporting the Federal Ministry of Health to scale up the cholera preparedness and response activities in the affected regions or districts