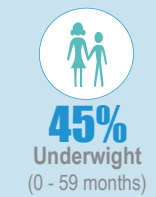
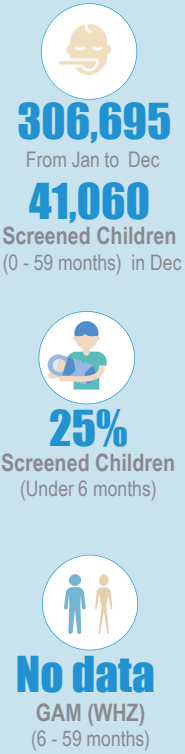
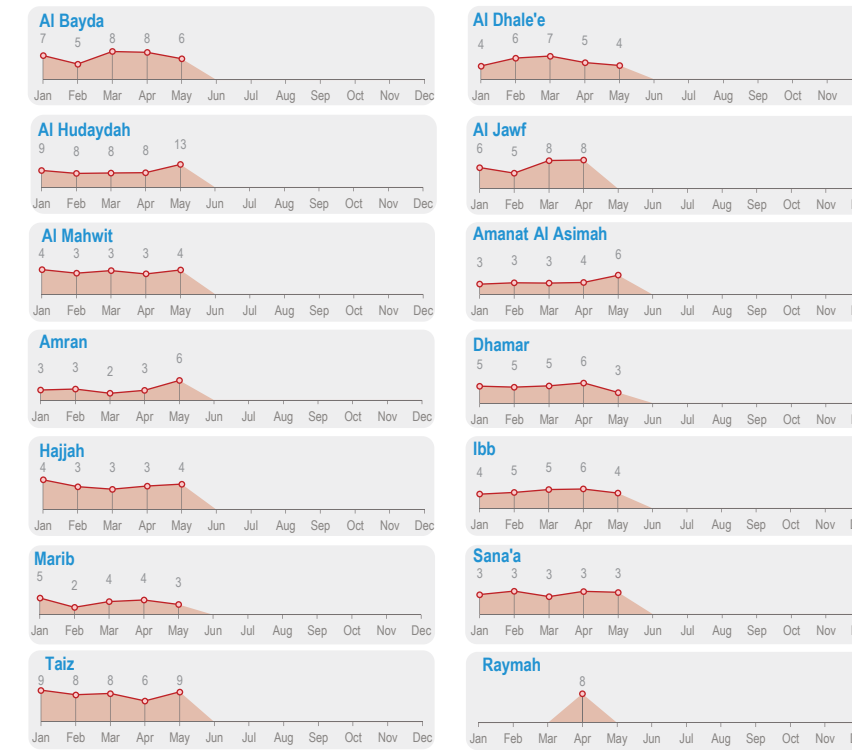
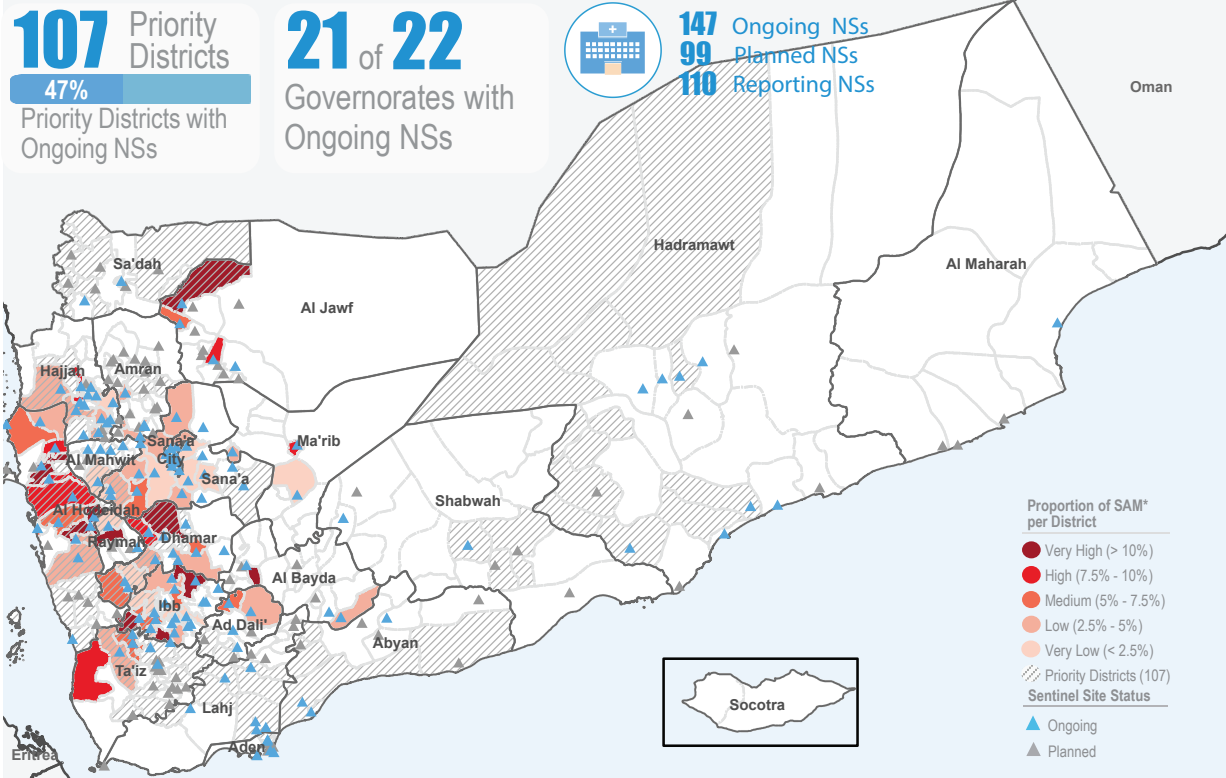


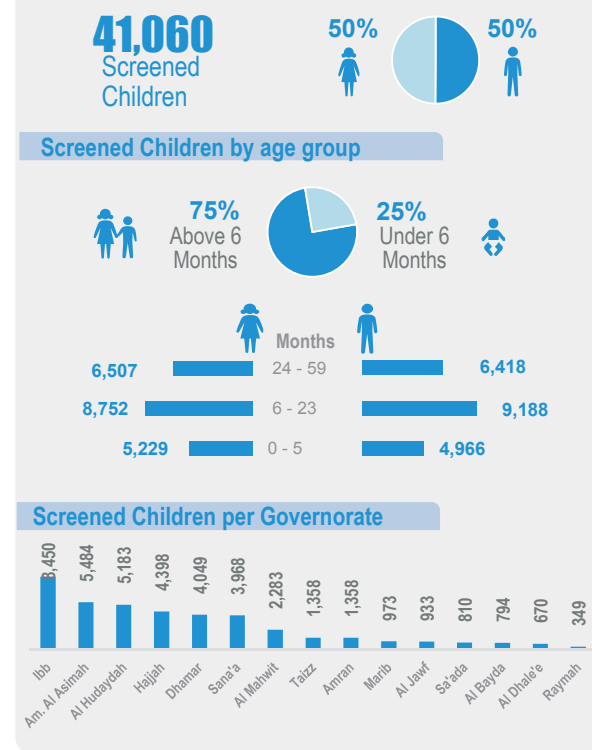
**Key Figures**  
Dec 2020



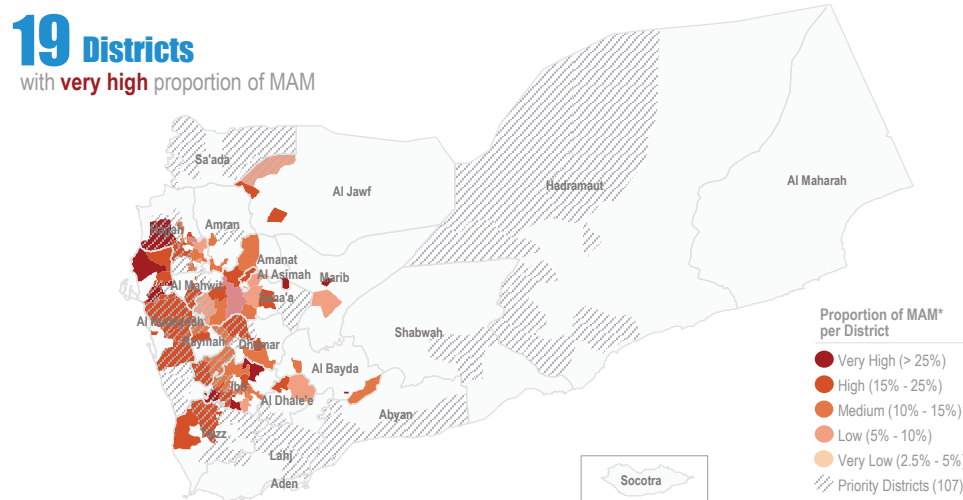
**Proportion† of Severe Acute Malnutrition (SAM)\* per District and Geographical Presence of Nutrition Sentinel Sites**



**Screened Children Dec**



**Proportion† of Moderate Acute Malnutrition (MAM)\* as of May 2020**



**Objectives of the Yemen Nutrition Surveillance System**

monitor children nutritional status early detection of malnutrition and case referral share information and trigger alert verification. ENSURING THE CONTINUITY AND SAFETY OF NSS SERVICES:

Nutritional assessment in NSS is normally performed through the measurement of child's weigh, height/length, age, hemoglobin level, breastfeeding status, oedema. To mitigate the impact of COVID-19, protocol adaptations are in place to ensure safe screening services and minimize the risk of cross infections while performing a correct assessment. The following indicators are currently assessed:

- Underweight: weight for age
- Acute malnutrition using MUAC
- Exclusive breastfeeding
- Oedema

Acute malnutrition by WHZ and stunting are temporarily excluded. Although the use of the height board is safe after sanitization, the preferential use of MUAC for children 6 to 59 months can be recommended as an interim measure.

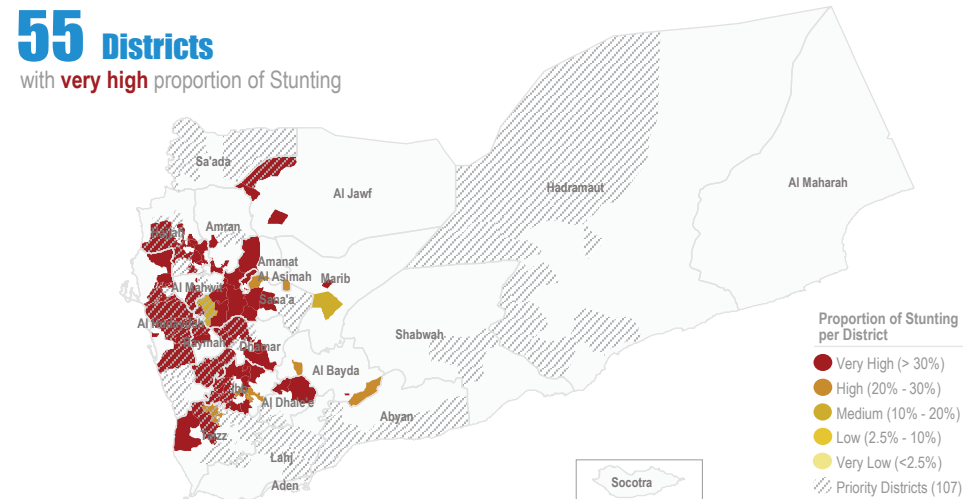
**Reference:**

- WHO-UNICEF Implementation Guidance for the Prevention, Early Detection and Treatment of Wasting in Children 0-59 Months Through National Health Systems in the Context of COVID-19.
- SOP for nutritional screening in Nutrition Surveillance Sites established in health facilities (Hospitals and PHC), in line with COVID19 preventive measures, Yemen

**Methodology:**

Facility-based sentinel site surveillance system, established in district hospitals across the country. The system provides proportion of children under five found suffering from any forms of malnutrition, out of the total children screened. It is not a formal survey using sampling methods to produce representative results. The results only reflect the status of children who have attended the health facility in the month under review. The system tracks WHO Global core nutrition indicators: Stunting, Wasting, Exclusive breastfeeding, Anemia. This bulletin is based on reports received by the health facility surveillance MoPHP teams. WHO supports the MoPHP and constantly works to expand coverage and improve data quality. With WHO technical support to national health authorities. Funded by the World Bank.

**Proportion† of Stunting as of May 2020**



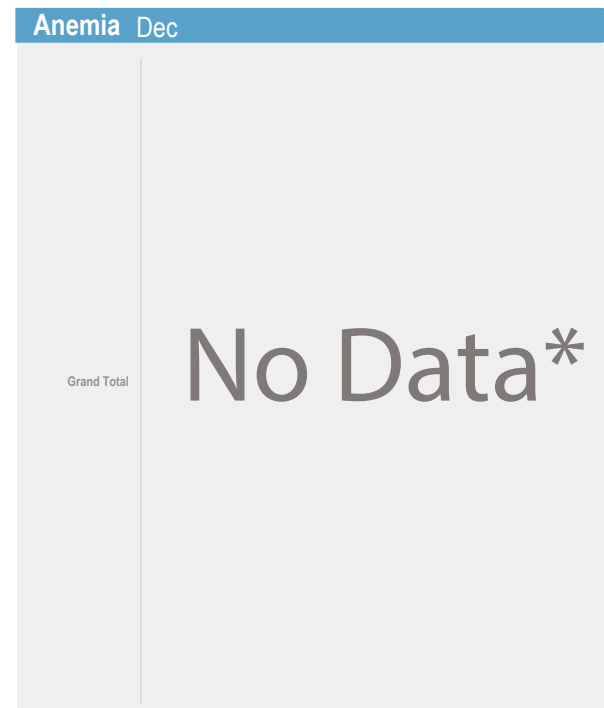
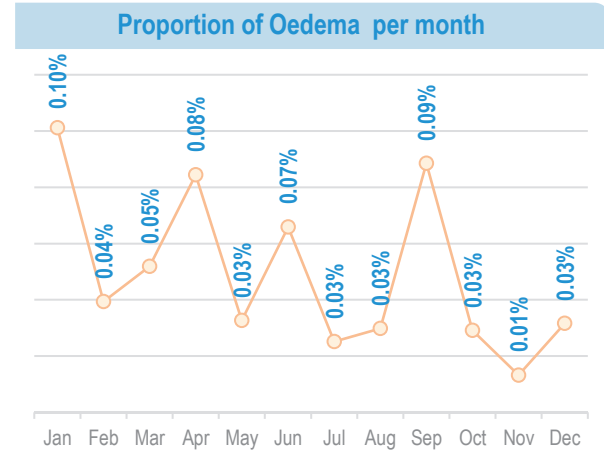
Summary for Nutrition Indicators Dec 2020

Governorate	# of Screened Children (0 - 5)	# of Screened Children (6 - 59)	Proportion of GAM (0 - 5)	Acute Malnutrition by Z- Score				Acute Malnutrition by MUAC				Underweight		Stunting		Exclusive Breastfeeding		Anemia		Oedema	
				# of MAM	Proportion of MAM	# of SAM	Proportion of SAM	# of MAM	Proportion of MAM	# of SAM	Proportion of SAM	# of Underweight	Proportion of Under weight	# of Stunting	Proportion of Stunting	# of EBF	Proportion of EBF (Yes)	# of Anemia	Proportion of Anemia	# of Oedema	Proportion of Oedema
Al Bayda	134	660						81	12%	25	4%					25	15%			0	0.0%
Al Dhale'e	133	537						120	22%	34	6%					39	25%			0	0.0%
Al Hudaydah	1,610	3,573						1,048	29%	380	11%					179	10%			1	0.0%
Al Jawf	192	741						116	16%	23	3%					35	17%			0	0.0%
Al Mahwit	571	1,712						306	18%	100	6%					109	16%			2	0.1%
Amanat Al Asimah	1,656	3,828						503	13%	88	2%					412	23%			0	0.0%
Amran	391	967						192	20%	26	3%					29	7%			0	0.0%
Dhahar	814	3,235						617	19%	121	4%					190	21%			2	0.0%
Hajjah	1,438	2,960						318	11%	85	3%					139	9%			0	0.0%
Ibb	2,019	6,431						1,128	18%	252	4%					420	19%			5	0.1%
Marib	164	809						113	14%	31	4%					57	29%			1	0.1%
Sana'a	612	3,356						374	11%	87	3%					164	23%			0	0.0%
Taizz	254	1,104						170	15%	62	6%					32	12%			0	0.0%
Raymah	71	278						53	19%	29	10%					17	22%			0	0.0%
Sa'ada	136	674						150	22%	68	10%					15	10%			2	0.2%

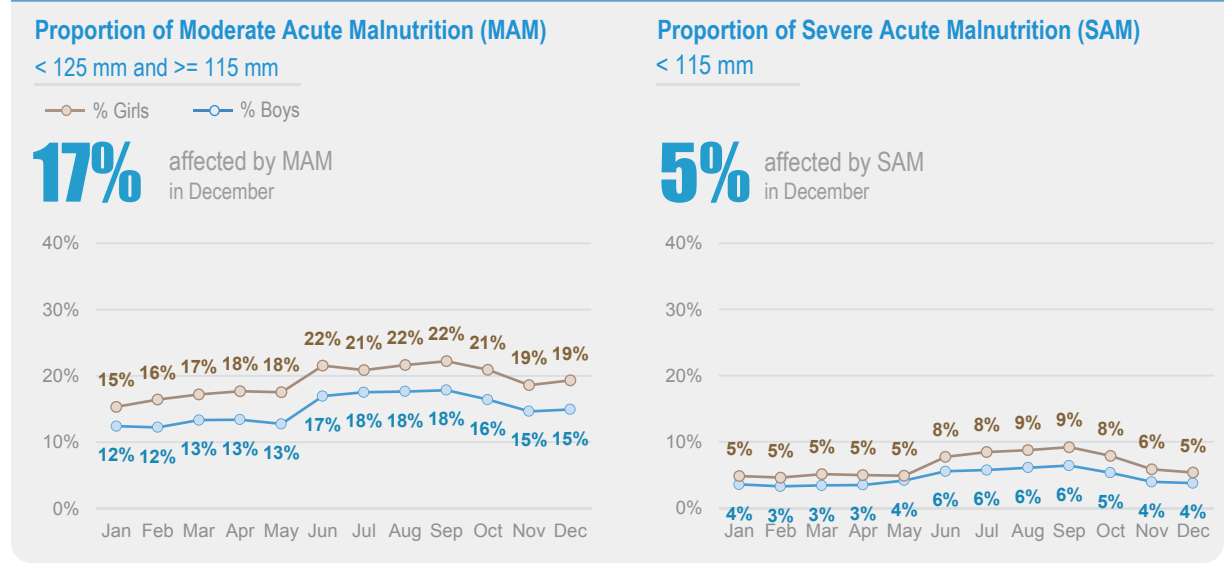
No Data\*

No Data\*

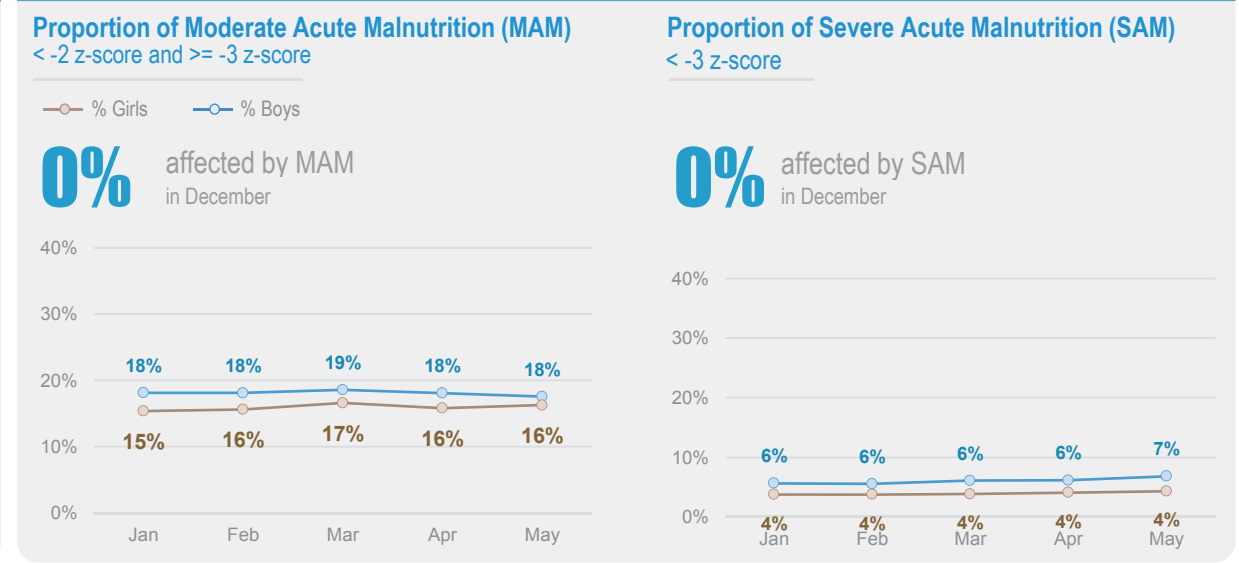
No Data\*



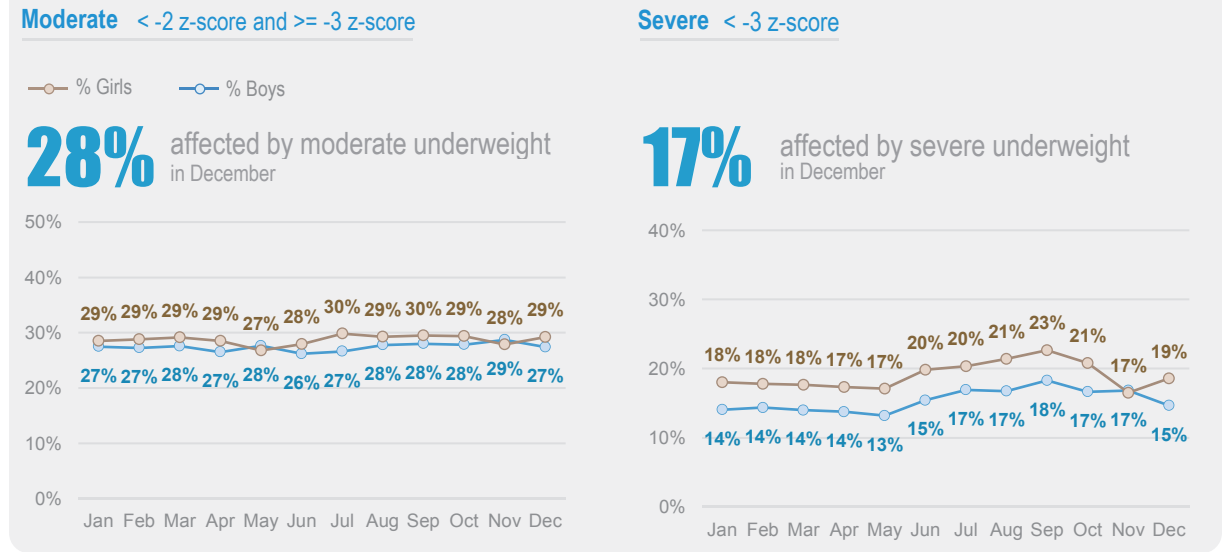
Acute Malnutrition by MUAC



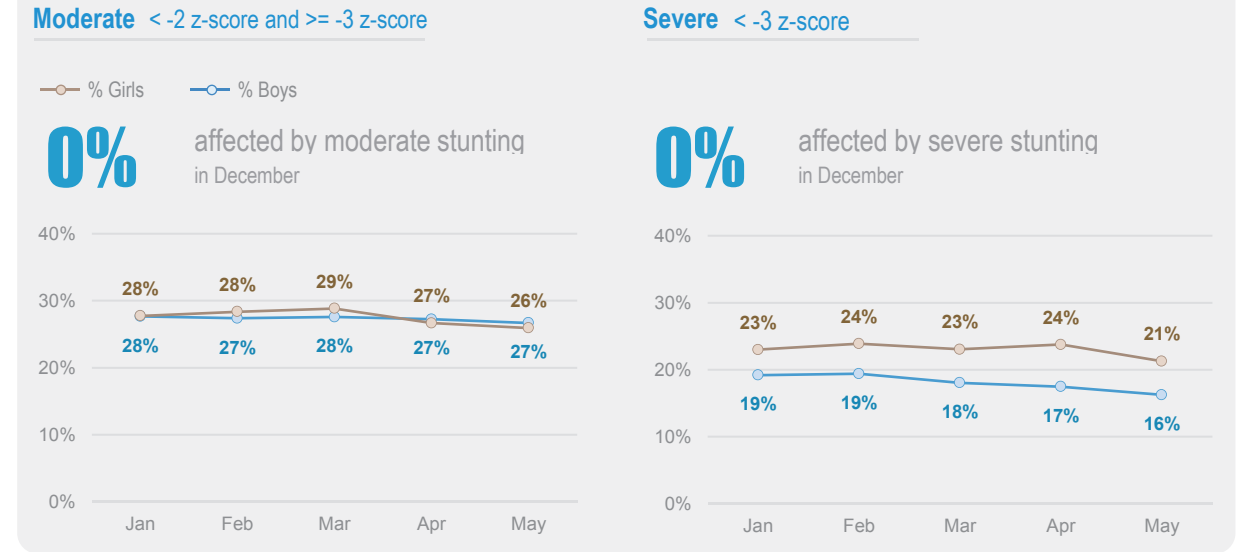
Acute Malnutrition by Weight/Height Z Score (WHZ)



Underweight by Weight/Age Z Score



Chronic Malnutrition (Stunting) by Height/Age Z Score



Exclusive Breastfeeding Dec

